



**US Army Corps
of Engineers®**

Levee Inspection Report

Name of System: Burr Street

Name of Segment: Gary Burr St

NLD System ID: 2605000004

NLD Segment ID: 2604000005

Segment Type: USACE Constructed, Public sponsor O&M

Levee Sponsor (Name and Organization): Little Calumet River Basin Development Commission

Inspection Report Prepared by: Brett Hanson

Date(s) of Inspection: 04/30/2021 - 04/30/2021

Other Segments Within This System

Segment Name	NLD Segment ID#	Segment Type	Segment Inspection Rating
Griffith River Road Levee	2604000014	Non-Federally Constructed, local O&M	Unacceptable
Griffith	2604000006	USACE Constructed, Public sponsor O&M	Minimally Acceptable

Contents of Inspection Report:

☒ Levee Inspection Summary

Inspection Checklist

- ☒ General Items
- ☒ Levee Embankment
- ☒ Concrete Floodwalls
- ☒ Interior Drainage System
- ☒ Pump Stations
- ☐ FDR System Channels

☒ Public Sponsor Pre-Inspection Form

☒ General Instructions

☒ Maps

Type of Inspection: ☐ Routine Inspection ☒ Periodic Inspection ☐ Special Inspection

Purpose of Special Inspection: _____

Ratings:

Segment Rating: ☐ Acceptable ☒ Minimally Acceptable ☐ Unacceptable ☐ No Verdict

System Rating: ☐ Acceptable ☒ Minimally Acceptable ☐ Unacceptable ☐ No Verdict

LSPM Signature: _____

Date Approved: 7/27/21

LSO Signature: _____

Date Approved: 7/27/21

Levee Inspection Team Members (Levee Sponsor, USACE, and Others)

Name	Organization	Discipline	Phone Number
Yuki Galisanao	USACE - Chicago District	Lead, Geotechnical	
Anna Dudek	USACE - Chicago District	Structural	
Jeremiah Haley	USACE - Chicago District	Electrical	
Armoni Towner	USACE - Chicago District	Mechanical	
Adam Karr	USACE - Chicago District	Geospatial	
Brett Hanson	USACE - Chicago District	Hydraulics	
Adrian Brudz	USACE - Chicago District	Structural	
Art Rundzaitis	USACE - Chicago District	Construction	
Dan Repay	LCRBDC	Local Sponsor	
Keenan Colquitt	Contractor	Sluice Gate Operator	
Kurt Walker	Contractor	Sluice Gate Operator	
William Brownlee	Contractor	Sluice Gate Operator	
Eric E. Otte	Contractor	Sluice Gate Operator	
Oliver King	Great Lakes Electrical	Pump Operator	
Greg Boudreaux	USACE - Chicago District	Economics	

Segment Rating Rationale:

[Describe the basis of the Segment rating considering (1) the general condition of the segment, (2) the rationale for Item ratings, categorized by Feature that contributed to the Segment rating, and (3) the number or severity of notable observations/deficiencies. The summary may also include information related to the condition of the levee, not otherwise captured in the Levee Inspection Checklist, if applicable.]

Minor issues with unwanted vegetation, debris, minor erosion, rutting, animal activity, silt blocking flap gate, sheet pile sealant deterioration, fencing issues.

System Rating Rationale:

[Synthesize information from the Segment rating rationales for each Segment within the System. For single-segment systems, see segment rating rationale above.]

The overall condition assessment of the Burr Street Levee System is rated 'Minimally Acceptable'. Engineering assessments determined that serious items rated as Unacceptable would not prevent the segment/system from performing as intended during the next flood event.

General Items for All Flood Damage Reduction Segments / Systems
For use during all inspections of all Flood Damage Reduction Segments / Systems

Rated Item	Rating	Rating Guidelines		Location/Remarks/Recommendations
1. Operations and Maintenance Manuals	A	A	Levee Owner's Manual, O&M Manuals, and/or manufacturer's operating instructions are present.	Justification: Sponsor has complete set of O&M Manuals.
		M	Sponsor manuals are lost or missing or out of date; however, sponsor will obtain manuals prior to next scheduled inspection.	
		U	Sponsor has not obtained lost or missing manuals identified during previous inspection.	
2. Emergency Supplies and Equipment (A or M only)	A	A	The sponsor maintains a stockpile of sandbags, shovels, and other flood fight supplies which will adequately supply all needs for the initial days of a flood fight. Sponsor determines required quantity of supplies after consulting with inspector.	Justification: The Local Sponsor has taken over maintaining flood fighting supplies from Gary. They share storage with Munster at their facility on Calumet and have a number of pallets of empty sandbags available. The slide gates are susceptible to theft. The Munster Public Works facility is about 7 miles from the east most railroad closure and would take about 16 minutes to travel along Ridge Road to avoid any road closures that may be impacted by flooding.
		M	The sponsor does not maintain an adequate supply of flood fighting materials as part of their preparedness activities.	
3. Flood Preparedness and Training (A or M only)	M	A	Sponsor has a written system-specific flood response plan and a solid understanding of how to operate, maintain, and staff the FDR system during a flood. Sponsor maintains a list of emergency contact information for appropriate personnel and other emergency response agencies.	Justification: Flood fighting is usually performed by the community. Gary has limited resources and a lot of turn over. They rely heavily on others to provide supplies and assistance. Updated Flood Handbooks were provided in 2019.
		M	The sponsor maintains a good working knowledge of flood response activities, but documentation of system-specific emergency procedures and emergency contact personnel is insufficient or out of date.	

Key: A = Acceptable. M = Minimally Acceptable; Maintenance is required. U = Unacceptable. N/A = Not Applicable. FDR = Flood Damage Reduction

Levee Embankments

For use during Initial and Continuing Eligibility Inspections of levee segments / systems

Rated Item	Rating	Rating Guidelines		Location/Remarks/Recommendations
1. Unwanted Vegetation Growth	M	A	The levee has little or no unwanted vegetation (trees, bush, or undesirable weeds), except for vegetation that is properly contained and/or situated on overbuilt sections, such that the mandatory 3-foot root-free zone is preserved around the levee profile. The levee has been recently mowed. The vegetation-free zone extends 15 feet from both the landside and riverside toes of the levee to the centerline of the tree. If the levee access easement doesn't extend to the described limits, then the vegetation-free zone must be maintained to the easement limits. Reference EM 1110-2-301 or Corps policy for regional vegetation variance.	2021-0057 : Tall vegetation near the landside toe. (M) 2021-0061 : Trees near the riverside toe. (M) 2021-0103 : Tall vegetation along landside toe. (M)
		M	Minimal vegetation growth (brush, weeds, or trees 2 inches in diameter or smaller) is present within the zones described above. This vegetation must be removed but does not currently threaten the operation or integrity of the levee.	
		U	Significant vegetation growth (brush, weeds, or any trees greater than 2 inches in diameter) is present within the zones described above and must be removed to reestablish or ascertain levee integrity.	
2. Sod Cover	A	A	There is good coverage of sod over the levee.	Justification: No issues noted.
		M	Approximately 25% of the sod cover is missing or damaged over a significant portion or over significant portions of the levee embankment. This may be the result of over-grazing or feeding on the levee, unauthorized vehicular traffic, chemical or insect problems, or burning during inappropriate seasons.	
		U	Over 50% of the sod cover is missing or damaged over a significant portion or portions of the levee embankment.	
		N/A	Surface protection is provided by other means.	
3. Encroachments	M	A	No trash, debris, unauthorized farming activity, structures, excavations, or other obstructions present within the easement area. Encroachments have been previously reviewed by the Corps, and it was determined that they do not diminish proper functioning of the levee.	2021-0011 : Debris on riverside slope. (M) 2021-0023 : Debris on riverside toe. (M) 2021-0027 : Debris on riverside toe. (M) 2021-0033 : Debris on landside toe. (M) 2021-0039 : Debris on landside slope. (M) 2021-0085 : Debris on crest. (M) 2021-0113 : Debris and drift wood at the landside toe. (M)
		M	Trash, debris, unauthorized farming activity, structures, excavations, or other obstructions present, or inappropriate activities noted that should be corrected but will not inhibit operations and maintenance or emergency operations. Encroachments have not been reviewed by the Corps.	
		U	Unauthorized encroachments or inappropriate activities noted are likely to inhibit operations and maintenance, emergency operations, or negatively impact the integrity of the levee.	
4. Closure Structures	NA	A	Closure structure in good repair. Placing equipment, stoplogs, and other materials are readily available at all times. Components are clearly marked and installation instructions/ procedures readily available. Trial erections have been accomplished in accordance with the O&M Manual.	
		U	Any of the following issues is cause for this rating: Closure structure in poor condition. Parts missing or corroded. Placing equipment may not be available within the anticipated warning time. The storage vaults cannot be opened during the time of inspection. Components of closure are not clearly marked and installation instructions/ procedures are not readily available. Trial erections have not been accomplished in accordance with the O&M Manual.	
		N/A	There are no closure structures along this component of the FDR segment / system.	

Key: A = Acceptable. M = Minimally Acceptable; Maintenance is required. U = Unacceptable. N/A = Not Applicable. FDR = Flood Damage Reduction

Levee Embankments

For use during Initial and Continuing Eligibility Inspections of levee segments / systems

Rated Item	Rating	Rating Guidelines		Location/Remarks/Recommendations
5. Slope Stability	A	A	No slides, sloughs, tension cracking, slope depressions, or bulges are present.	Justification: No issues noted.
		M	Minor slope stability problems that do not pose an immediate threat to the levee embankment.	
		U	Major slope stability problems (ex. deep seated sliding) identified that must be repaired to reestablish the integrity of the levee embankment.	
6. Erosion/ Bank Caving	M	A	No erosion or bank caving is observed on the landward or riverward sides of the levee that might endanger its stability.	2021-0127 : Minor erosion on riverside toe, 6" scarp. (M)
		M	There are areas where minor erosion is occurring or has occurred on or near the levee embankment, but levee integrity is not threatened.	
		U	Erosion or caving is occurring or has occurred that threatens the stability and integrity of the levee. The erosion or caving has progressed into the levee section or into the extended footprint of the levee foundation and has compromised the levee foundation stability.	
7. Settlement	A	A	No observed depressions in crown. Records exist and indicate no unexplained historical changes.	Justification: No issues noted.
		M	Minor irregularities that do not threaten integrity of levee. Records are incomplete or inclusive.	
		U	Obvious variations in elevation over significant reaches. No records exist or records indicate that design elevation is compromised.	
8. Depressions/ Rutting	M	A	There are scattered, shallow ruts, pot holes, or other depressions on the levee that are unrelated to levee settlement. The levee crown, embankments, and access road crowns are well established and drain properly without any ponded water.	2021-0005 : Rutting on riverside slope. (A) 2021-0007 : Deep ruts on landside toe. (M) 2021-0009 : Rutting on landside toe. (M) 2021-0015 : Rutting on riverside slope. (A) 2021-0021 : Deep rutting on riverside slope. (M) 2021-0025 : Depression on landside slope. (M) 2021-0031 : Deep rutting on riverside slope. (M) 2021-0035 : Deep rutting on landside crest. (M) 2021-0049 : Deep ruts on riverside toe. (M) 2021-0051 : Deep hole in crest. (M) 2021-0053 : Deep ruts and ponding on riverside toe. (M) 2021-0059 : Deep ruts and ponding on landside toe. (M) 2021-0063 : Rutting and ponding alongside the landside toe. (M) 2021-0067 : Minor rutting on crest of levee. (A) 2021-0079 : Rutting alongside the riverside toe. (M) 2021-0083 : Multiple ruts on riverside slope. (M) 2021-0087 : Deep ruts on riverside slope. (M) 2021-0101 : Rutting on the crest. (M) 2021-0105 : Rutting on landside slope. (M) 2021-0107 : Deep rut and ponding on riverside toe. (M) 2021-0109 : Deep ruts and ponding on landside toe. (M) 2021-0121 : Depression on riverside slope and toe. (M) 2021-0129 : Deep ruts and ponding on riverside toe. (M) 2021-0131 : Deep ruts and ponding on riverside toe. (M) 2021-0135 : Deep ruts and ponding on landside toe. (M)
		M	There are some infrequent minor depressions less than 6 inches deep in the levee crown, embankment, or access roads that will pond water.	
		U	There are depressions greater than 6 inches deep that will pond water.	

Key: A = Acceptable. M = Minimally Acceptable; Maintenance is required. U = Unacceptable. N/A = Not Applicable. FDR = Flood Damage Reduction

Controlled Unclassified Information (CUI): This document contains levee information that shall not be released in an uncontrolled manner

**Flood Damage Reduction Segments / Systems
Inspection Report**

**Levee Embankments
Page 2 of 4**

Levee Embankments

For use during Initial and Continuing Eligibility Inspections of levee segments / systems

Rated Item	Rating	Rating Guidelines		Location/Remarks/Recommendations
9. Cracking	A	A	Minor longitudinal, transverse, or desiccation cracks with no vertical movement along the crack. No cracks extend continuously through the levee crest.	Justification: No issues noted.
		M	Longitudinal and/or transverse cracks up to 6 inches in depth with no vertical movement along the crack. No cracks extend continuously through the levee crest. Longitudinal cracks are no longer than the height of the levee.	
		U	Cracks exceed 6 inches in depth. Longitudinal cracks are longer than the height of the levee and/or exhibit vertical movement along the crack. Transverse cracks extend through the entire levee width.	
10. Animal Control	M	A	Continuous animal burrow control program in place that includes the elimination of active burrowing and the filling in of existing burrows.	2021-0013 : Animal burrow mounds typical along landside slope. (A) 2021-0073 : Animal burrow 3.5 ft deep on landside slope. The animal burrows go upslope and downslope. (M) 2021-0075 : Collapsed animal burrow on landside slope. (A) 2021-0089 : Animal burrow, 6" deep, on crest. (A) 2021-0111 : Multiple animal burrows on riverside toe. Deepest one is 1 ft. (M) 2021-0115 : Multiple animal burrows, 6" deep, on riverside toe. (M) 2021-0117 : Animal burrow, 1.5 ft deep, on riverside toe and slope. (M) 2021-0119 : Collapsed and non collapsed animal burrows on riverside slope. (M) 2021-0123 : Animal burrow 10" deep on riverside toe. (M) 2021-0125 : Animal burrow 14 inches deep on riverside toe. (M)
		M	The existing animal burrow control program needs to be improved. Several burrows are present which may lead to seepage or slope stability problems, and they require immediate attention.	
		U	Animal burrow control program is not effective or is nonexistent. Significant maintenance is required to fill existing burrows, and the levee will not provide reliable flood protection until this maintenance is complete.	
11. Culverts/ Discharge Pipes (This item includes both concrete and corrugated metal pipes.)	A	A	There are no breaks, holes, cracks in the discharge pipes/ culverts that would result in significant water leakage. The pipe shape is still essentially circular. All joints appear to be closed and the soil tight. Corrugated metal pipes, if present, are in good condition with 100% of the original coating still in place (either asphalt or galvanizing) or have been relined with appropriate material, which is still in good condition. Condition of pipes has been verified using television camera video taping or visual inspection methods within the past five years, and the report for every pipe is available for review by the inspector.	Justification: Camera inspection submitted on 9/28/18 for the following culverts: 24-inch CMP by turnaround No issues noted. Next culvert inspection to be performed in 2023.
		M	There are a small number of corrosion pinholes or cracks that could leak water and need to be repaired, but the entire length of pipe is still structurally sound and is not in danger of collapsing. Pipe shape may be ovalized in some locations but does not appear to be approaching a curvature reversal. A limited number of joints may have opened and soil loss may be beginning. Any open joints should be repaired prior to the next inspection. Corrugated metal pipes, if present, may be showing corrosion and pinholes but there are no areas with total section loss. Condition of pipes has been verified using television camera video taping or visual inspection methods within the past five years, and the report for every pipe is available for review by the inspector.	
		U	Culvert has deterioration and/or has significant leakage; it is in danger of collapsing or as already begun to collapse. Corrugated metal pipes have suffered 100% section loss in the invert. HOWEVER: Even if pipes appear to be in good condition, as judged by an external visual inspection, an Unacceptable Rating will be assigned if the condition of pipes has not been verified using television camera video taping or visual inspection methods within the past five years, and reports for all pipes are not available for review by the inspector.	
		N/A	There are no discharge pipes/ culverts.	

Key: A = Acceptable. M = Minimally Acceptable; Maintenance is required. U = Unacceptable. N/A = Not Applicable. FDR = Flood Damage Reduction

Controlled Unclassified Information (CUI): This document contains levee information that shall not be released in an uncontrolled manner

**Flood Damage Reduction Segments / Systems
Inspection Report**

**Levee Embankments
Page 3 of 4**

Levee Embankments

For use during Initial and Continuing Eligibility Inspections of levee segments / systems

Rated Item	Rating	Rating Guidelines		Location/Remarks/Recommendations
12. Riprap Revetments & Bank Protection	A	A	No riprap displacement or stone degradation that could pose an immediate threat to the integrity of channel bank. Riprap intact with no woody vegetation present.	Justification: No issues noted.
		M	Minor riprap displacement or stone degradation that could pose an immediate threat to the integrity of the channel bank. Unwanted vegetation must be cleared or sprayed with an appropriate herbicide.	
		U	Significant riprap displacement, exposure of bedding, or stone degradation observed. Scour activity is undercutting banks, eroding embankments, or impairing channel flows by causing turbulence or shoaling. Rock protection is hidden by dense brush, trees, or grasses.	
		N/A	There is no riprap protecting this feature of the segment / system, or riprap is discussed in another section.	
13. Revetments other than Riprap	NA	A	Existing revetment protection is properly maintained, undamaged, and clearly visible.	
		M	Minor revetment displacement or deterioration that does not pose an immediate threat to the integrity of the levee. Unwanted vegetation must be cleared or sprayed with an appropriate herbicide.	
		U	Significant revetment displacement, deterioration, or exposure of bedding observed. Scour activity is undercutting banks, eroding embankments, or impairing channel flows by causing turbulence or shoaling. Revetment protection is hidden by dense brush and trees.	
		N/A	There are no such revetments protecting this feature of the segment / system.	
14. Underseepage Relief Wells/ Toe Drainage Systems	NA	A	Toe drainage systems and pressure relief wells necessary for maintaining FDR segment / system stability during high water functioned properly during the last flood event and no sediment is observed in horizontal system (if applicable). Nothing is observed which would indicate that the drainage systems won't function properly during the next flood, and maintenance records indicate regular cleaning. Wells have been pumped tested within the past 5 years and documentation is provided.	
		M	Toe drainage systems or pressure relief wells are damaged and may become clogged if they are not repaired. Maintenance records are incomplete or indicate irregular cleaning and pump testing.	
		U	Toe drainage systems or pressure relief wells necessary for maintaining FDR segment / system stability during flood events have fallen into disrepair or have become clogged. No maintenance records. No documentation of the required pump testing.	
		N/A	There are no relief wells/ toe drainage systems along this component of the FDR segment / system.	
15. Seepage	A	A	No evidence or history of unrepaired seepage, saturated areas, or boils.	Justification: No issues noted.
		M	Evidence or history of minor unrepaired seepage or small saturated areas at or beyond the landside toe but not on the landward slope of levee. No evidence of soil transport.	
		U	Evidence or history of active seepage, extensive saturated areas, or boils.	

Key: A = Acceptable. M = Minimally Acceptable; Maintenance is required. U = Unacceptable. N/A = Not Applicable. FDR = Flood Damage Reduction

Controlled Unclassified Information (CUI): This document contains levee information that shall not be released in an uncontrolled manner

**Flood Damage Reduction Segments / Systems
Inspection Report**

**Levee Embankments
Page 4 of 4**

Floodwalls

For use during Initial and Continuing Eligibility Inspections of all floodwalls

Rated Item	Rating	Rating Guidelines		Location/Remarks/Recommendations
1. Unwanted Vegetation Growth	A	A	A grass-only or paved zone is maintained on both sides of the floodwall, free of all trees, brush, and undesirable weeds. The vegetation-free zone extends 15 feet from both the land and riverside of the floodwall, at ground-level, to the centerline of the tree. Additionally, an 8- foot root-free zone is maintained around the entire structure, including the floodwall toe, heel, and any toe-drains. If the floodwall access easement doesn't extend to the described limits, then the vegetation-free zone must be maintained to the easement limits. Reference EM 1110- 2-301 and/or Corps policy for regional vegetation variance.	2021-0029 : Vegetation on riverside. (A) Justification: No issues noted.
		M	Minimal vegetation growth (brush, weeds, or trees 2 inches in diameter or smaller) is present within the zones described above. This vegetation must be removed but does not currently threaten the operation or integrity of the floodwall.	
		U	Significant vegetation growth (brush, weeds, or any trees greater than 2 inches in diameter) is present within the zones described above. This vegetation threatens the operation or integrity of the floodwall and must be removed.	
2. Encroachments	M	A	No trash, debris, unauthorized structures, excavations, or other obstructions present within the easement area. Encroachments have been previously reviewed by the Corps, and it was determined that they do not diminish proper functioning of the floodwall.	2021-0095 : Debris on riverside of the flood wall. (M)
		M	Trash, debris, unauthorized structures, excavations, or other obstructions present, or inappropriate activities noted that should be corrected but will not inhibit operations and maintenance or emergency operations. Encroachments have not been reviewed by the Corps.	
		U	Unauthorized encroachments or inappropriate activities noted are likely to inhibit operations and maintenance, emergency operations, or negatively impact the integrity of the floodwall.	
3. Closure Structures (Stop Log Closures and Gates) (A or U only)	A	A	Closure structure in good repair. Placing equipment, stoplogs, and other materials are readily available at all times. Components are clearly marked and installation instructions/ procedures readily available. Trial erections have been accomplished in accordance with the O&M Manual.	2021-0097 : Missing slide gate in storage at RR East. (A)
		U	Any of the following issues is cause for this rating: Closure structure in poor condition. Parts missing or corroded. Placing equipment may not be available within the anticipated warning time. The storage vaults cannot be opened during the time of inspection. Components of closure are not clearly marked and installation instructions/ procedures are not readily available. Trial erections have not been accomplished in accordance with the O&M Manual.	
		N/A	There are no closure structures along this component of the FDR segment / system.	
4. Concrete Surfaces	M	A	Negligible spalling, scaling or cracking. If the concrete surface is weathered or holds moisture, it is still satisfactory but should be seal coated to prevent freeze/ thaw damage.	2021-0041 : Cracking on top of floodwall leading to monolith joint. Seal. (M) 2021-0043 : Beginning signs of spalling on landside face. Monitor. (A) 2021-0047 : Cracking spanning the height of the wall on riverside face. Monitor. (A)
		M	Spalling, scaling, and open cracking present, but the immediate integrity or performance of the structure is not threatened. Reinforcing steel may be exposed. Repairs/ sealing is necessary to prevent additional damage during periods of thawing and freezing.	
		U	Surface deterioration or deep cracks present that may result in an unreliable structure. Any surface deterioration that exposes the sheet piling or lies adjacent to monolith joints may indicate underlying reinforcement corrosion and is unacceptable.	

Key: A = Acceptable. M = Minimally Acceptable; Maintenance is required. U = Unacceptable. N/A = Not Applicable. FDR = Flood Damage Reduction

Controlled Unclassified Information (CUI): This document contains levee information that shall not be released in an uncontrolled manner

**Flood Damage Reduction Segments / Systems
Inspection Report**

**Floodwalls
Page 1 of 3**

Floodwalls

For use during Initial and Continuing Eligibility Inspections of all floodwalls

Rated Item	Rating	Rating Guidelines		Location/Remarks/Recommendations
5. Tilting, Sliding or Settlement of Concrete Structures	A	A	There are no significant areas of tilting, sliding, or settlement that would endanger the integrity of the structure.	Justification: No issues noted.
		M	There are areas of tilting, sliding, or settlement (either active or inactive) that need to be repaired. The maximum offset, either laterally or vertically, does not exceed 2 inches unless the movement can be shown to be no longer actively occurring. The integrity of the structure is not in danger.	
		U	There are areas of tilting, sliding, or settlement (either active or inactive) that threaten the structure's integrity and performance. Any movement that has resulted in failure of the waterstop (possibly identified by daylight visible through the joint) is unacceptable. Differential movement of greater than 2 inches between any two adjacent monoliths, either laterally or vertically, is unacceptable unless it can be shown that the movement is no longer active. Also, if the floodwall is of I-wall construction, then any visible or measurable tilting of the wall toward the protected side that has created an open horizontal crack on the riverside base of a monolith is unacceptable.	
6. Foundation of Concrete Structures	A	A	No active erosion, scouring, or bank caving that might endanger the structure's stability.	Justification: No issues noted.
		M	There are areas where the ground is eroding towards the base of the structure. Efforts need to be taken to slow and repair this erosion, but it is not judged to be close enough to the structure or to be progressing rapidly enough to affect structural stability before the next inspection. For the purposes of inspection, the erosion or scour is not closer to the riverside face of the wall than twice the floodwall's underground base width if the wall is of L-wall or T-wall construction; or if the wall is of sheetpile or I-wall construction, the erosion is not closer than twice the wall's visible height. Additionally, rate of erosion is such that the wall is expected to remain stable until the next inspection.	
		U	Erosion or bank caving observed that is closer to the wall than the limits described above, or is outside these limits but may lead to structural instabilities before the next inspection. Additionally, if the floodwall is of I-wall or sheetpile construction, the foundation is unacceptable if any turf, soil or pavement material got washed away from the landside of the I-wall as the result of a previous overtopping event.	
7. Monolith Joints	M	A	The joint material is in good condition. The exterior joint sealant is intact and cracking/ desiccation is minimal. Joint filler material and/or waterstop is not visible at any point.	2021-0045 : Crack in monolith joint sealant exposing filler material underneath. Repair. (M) 2021-0093 : Riverside joint sealant coming out of interlocks. (M) 2021-0099 : Riverside sealant coming out of interlocks. (M)
		M	The joint material has appreciable deterioration to the point where joint filler material and/or waterstop is visible in some locations. This needs to be repaired or replaced to prevent spalling and cracking during freeze/ thaw cycles, and to ensure water tightness of the joint.	
		U	The joint material is severely deteriorated or the concrete adjacent to the monolith joints has spalled and cracked, damaging the waterstop; in either case damage has occurred to the point where it is apparent that the joint is no longer watertight and will not provide the intended level of protection during a flood.	
		N/A	There are no monolith joints in the floodwall.	

Key: A = Acceptable. M = Minimally Acceptable; Maintenance is required. U = Unacceptable. N/A = Not Applicable. FDR = Flood Damage Reduction

Controlled Unclassified Information (CUI): This document contains levee information that shall not be released in an uncontrolled manner

**Flood Damage Reduction Segments / Systems
Inspection Report**

**Floodwalls
Page 2 of 3**

Floodwalls

For use during Initial and Continuing Eligibility Inspections of all floodwalls

Rated Item	Rating	Rating Guidelines		Location/Remarks/Recommendations
8. Underseepage Relief Wells/ Toe Drainage Systems	NA	A	Toe drainage systems and pressure relief wells necessary for maintaining FDR segment / system stability during high water functioned properly during the last flood event and no sediment is observed in horizontal system (if applicable). Nothing is observed which would indicate that the drainage systems won't function properly during the next flood, and maintenance records indicate regular cleaning. Wells have been pumped tested within the past 5 years and documentation is provided.	
		M	Toe drainage systems or pressure relief wells are damaged and may become clogged if they are not repaired. Maintenance records are incomplete or indicate irregular cleaning and pump testing.	
		U	Toe drainage systems or pressure relief wells necessary for maintaining FDR segment / system stability during flood events have fallen into disrepair or have become clogged. No maintenance records. No documentation of the required pump testing.	
		N/A	There are no relief wells/ toe drainage systems along this component of the FDR segment / system.	
9. Seepage	A	A	No evidence or history of unrepaired seepage, saturated areas, or boils.	Justification: No issues noted.
		M	Evidence or history of minor unrepaired seepage or small saturated areas at or beyond the landside toe but not on the landward slope of levee. No evidence of soil transport.	
		U	Evidence or history of active seepage, extensive saturated areas, or boils.	

Key: A = Acceptable. M = Minimally Acceptable; Maintenance is required. U = Unacceptable. N/A = Not Applicable. FDR = Flood Damage Reduction

Controlled Unclassified Information (CUI): This document contains levee information that shall not be released in an uncontrolled manner

**Flood Damage Reduction Segments / Systems
Inspection Report**

**Floodwalls
Page 3 of 3**

Interior Drainage System

For use during Initial and Continuing Eligibility Inspections of interior drainage systems

Rated Item	Rating	Rating Guidelines		Location/Remarks/Recommendations
1. Vegetation and Obstructions	M	A	No obstructions, vegetation, debris, or sediment accumulation noted within interior drainage channels or blocking the culverts, inlets, or discharge areas. Concrete joints and weep holes are free of grass and weeds.	2021-0003 : Small trees and tall vegetation in south ditch. (M) 2021-0019 : Small trees and vegetation in ditch (A) 2021-0037 : Tall vegetation in the ditch. (M)
		M	Obstructions, vegetation, debris, or sediment are minor and have not impaired channel flow capacity or blocked more than 10% of any culvert openings, but should be removed. A limited volume of grass and weeds may be present in concrete channel joints and weep holes.	
		U	Obstructions, vegetation, debris, or sediment have impaired the channel flow capacity or blocked more than 10% of a culvert opening. Sediment and debris removal required to reestablish flow capacity.	
2. Encroachments	A	A	No trash, debris, unauthorized structures, excavations, or other obstructions present within the easement area. Encroachments have been previously reviewed by the Corps, and it was determined that they do not diminish proper functioning of the interior drainage system.	Justification: No issues noted.
		M	Trash, debris, unauthorized structures, excavations, or other obstructions present, or inappropriate activities noted that should be corrected but will not inhibit operations and maintenance or emergency operations. Encroachments have not been reviewed by the Corps.	
		U	Unauthorized encroachments or inappropriate activities noted are likely to inhibit operations and maintenance, emergency operations, or negatively impact the integrity of this component of the interior drainage system.	
3. Ponding Areas	NA	A	No trash, debris, structures, or other obstructions present within the ponding areas. Sediment deposits do not exceed 10% of capacity.	
		M	Trash, debris, excavations, structures, or other obstructions present, or inappropriate activities that will not inhibit operations and maintenance. Sediment deposits do not exceed 30% of capacity.	
		U	Trash, debris, excavations, structures, or other obstructions, or other encroachments or activities noted that will inhibit operations, maintenance, or emergency work. Sediment deposits exceeds 30% of capacity.	
		N/A	There are no ponding areas associated with the interior drainage system.	
4. Fencing and Gates	NA	A	Fencing is in good condition and provides protection against falling or unauthorized access. Gates open and close freely, locks are in place, and there is little corrosion on metal parts.	
		M	Fencing or gates are damaged or corroded but appear to be maintainable. Locks may be missing or damaged.	
		U	Fencing and gates are damaged or corroded to the point that replacement is required, or potentially dangerous features are not secured.	
		N/A	There are no features noted that require safety fencing.	

Key: A = Acceptable. M = Minimally Acceptable; Maintenance is required. U = Unacceptable. N/A = Not Applicable. FDR = Flood Damage Reduction

Interior Drainage System

For use during Initial and Continuing Eligibility Inspections of interior drainage systems

Rated Item	Rating	Rating Guidelines		Location/Remarks/Recommendations
5. Concrete Surfaces (Such as gatewells, outfalls, intakes, or culverts)	A	A	Negligible spalling, scaling or cracking. If the concrete surface is weathered or holds moisture, it is still satisfactory but should be seal coated to prevent freeze/ thaw damage.	Justification: No issues noted.
		M	Spalling, scaling, and open cracking present, but the immediate integrity or performance of the structure is not threatened. Reinforcing steel may be exposed. Repairs/ sealing is necessary to prevent additional damage during periods of thawing and freezing.	
		U	Surface deterioration or deep cracks present that may result in an unreliable structure. Any surface deterioration that exposes the sheet piling or lies adjacent to monolith joints may indicate underlying reinforcement corrosion and is unacceptable.	
		N/A	There are no concrete items in the interior drainage system.	
6. Tilting, Sliding or Settlement of Concrete and Sheet Pile Structures (Such as gate wells, outfalls, intakes, or culverts)	A	A	There are no significant areas of tilting, sliding, or settlement that would endanger the integrity of the structure.	Justification: No issues noted.
		M	There are areas of tilting, sliding, or settlement (either active or inactive) that need to be repaired. The maximum offset, either laterally or vertically, does not exceed 2 inches unless the movement can be shown to be no longer actively occurring. The integrity of the structure is not in danger.	
		U	There are areas of tilting, sliding, or settlement (either active or inactive) that threaten the structure's integrity and performance. Any movement that has resulted in failure of the waterstop (possibly identified by daylight visible through the joint) is unacceptable. Differential movement of greater than 2 inches between any two adjacent monoliths, either laterally or vertically, is unacceptable unless it can be shown that the movement is no longer active. Also, if the floodwall is of I-wall construction, then any visible or measurable tilting of the wall toward the protected side that has created an open horizontal crack on the riverside base of a monolith is unacceptable.	
		N/A	There are no concrete items in the interior drainage system.	
7. Foundation of Concrete Structures (Such as culverts, inlet and discharge structures, or gatewells.)	A	A	No active erosion, scouring, or bank caving that might endanger the structure's stability.	Justification: No issues noted.
		M	There are areas where the ground is eroding towards the base of the structure. Efforts need to be taken to slow and repair this erosion, but it is not judged to be close enough to the structure or to be progressing rapidly enough to affect structural stability before the next inspection. The rate of erosion is such that the structure is expected to remain stable until the next inspection.	
		U	Erosion or bank caving observed that may lead to structural instabilities before the next inspection.	
		N/A	There are no concrete items in the interior drainage system.	
8. Monolith Joints	A	A	The joint material is in good condition. The exterior joint sealant is intact and cracking/ desiccation is minimal. Joint filler material and/or waterstop is not visible at any point.	Justification: No issues noted.
		M	The joint material has appreciable deterioration to the point where joint filler material and/or waterstop is visible in some locations. This needs to be repaired or replaced to prevent spalling and cracking during freeze/ thaw cycles, and to ensure water tightness of the joint.	
		U	The joint material is severely deteriorated or the concrete adjacent to the monolith joints has spalled and cracked, damaging the waterstop; in either case damage has occurred to the point where it is apparent that the joint is no longer watertight and will not provide the intended level of protection during a flood.	
		N/A	There are no monolith joints in the interior drainage system.	

Key: A = Acceptable. M = Minimally Acceptable; Maintenance is required. U = Unacceptable. N/A = Not Applicable. FDR = Flood Damage Reduction

Interior Drainage System

For use during Initial and Continuing Eligibility Inspections of interior drainage systems

Rated Item	Rating	Rating Guidelines		Location/Remarks/Recommendations
9. Culverts/ Discharge Pipes	M	A	There are no breaks, holes, cracks in the discharge pipes/ culverts that would result in significant water leakage. The pipe shape is still essentially circular. All joints appear to be closed and the soil tight. Corrugated metal pipes, if present, are in good condition with 100% of the original coating still in place (either asphalt or galvanizing) or have been relined with appropriate material, which is still in good condition. Condition of pipes has been verified using television camera video taping or visual inspection methods within the past five years, and the report for every pipe is available for review by the inspector.	2021-0017 : Damaged CMP (M) Justification: Camera inspection submitted on 9/28/18 for the following culverts: 24-inch CMP by turnaround No issues noted. Next culvert inspection to be performed in 2023.
		M	There are a small number of corrosion pinholes or cracks that could leak water and need to be repaired, but the entire length of pipe is still structurally sound and is not in danger of collapsing. Pipe shape may be ovalized in some locations but does not appear to be approaching a curvature reversal. A limited number of joints may have opened and soil loss may be beginning. Any open joints should be repaired prior to the next inspection. Corrugated metal pipes, if present, may be showing corrosion and pinholes but there are no areas with total section loss. Condition of pipes has been verified using television camera video taping or visual inspection methods within the past five years, and the report for every pipe is available for review by the inspector.	
		U	Culvert has deterioration and/or has significant leakage; it is in danger of collapsing or as already begun to collapse. Corrugated metal pipes have suffered 100% section loss in the invert. HOWEVER: Even if pipes appear to be in good condition, as judged by an external visual inspection, an Unacceptable Rating will be assigned if the condition of pipes has not been verified using television camera video taping or visual inspection methods within the past five years, and reports for all pipes are not available for review by the inspector.	
		N/A	There are no discharge pipes/ culverts.	
10. Sluice / Slide Gates	NA	A	Gates open and close freely to a tight seal or minor leakage. Gate operators are in good working condition and are properly maintained. Sill is free of sediment and other obstructions. Gates and lifters have been maintained and are free of corrosion. Documentation provided during the inspection.	
		M	Gates and/or operators have been damaged or have minor corrosion, and open and close with resistance or binding. Leakage quantity is controllable, but maintenance is required. Sill is free of sediment and other obstructions.	
		U	Gates do not open or close and/or operators do not function. Gate, stem, lifter and/or guides may be damaged or have major corrosion.	
		N/A	There are no sluice/ slide gates.	
11. Flap Gates/ Flap Valves/ Pinch Valves	M	A	Gates/ valves open and close easily with minimal leakage, have no corrosion damage, and have been exercised and lubricated as required.	2021-0004 : GB-4: There is a large amount of debris blocking the flap gate and a hearty amount of trash in the general area. (M)
		M	Gates/ valves will not fully open or close because of obstructions that can be easily removed, or have minor corrosion damage that requires maintenance.	
		U	Gates/ valves are missing, have been damaged, or have deteriorated to the point that they need to be replaced.	
		N/A	There are no flap gates.	

Key: A = Acceptable. M = Minimally Acceptable; Maintenance is required. U = Unacceptable. N/A = Not Applicable. FDR = Flood Damage Reduction

Interior Drainage System

For use during Initial and Continuing Eligibility Inspections of interior drainage systems

Rated Item	Rating	Rating Guidelines		Location/Remarks/Recommendations
12. Trash Racks (non-mechanical)	A	A	Trash racks are fastened in place and properly maintained.	Justification: No issues noted.
		M	Trash racks are in place but are unfastened or have bent bars that allow debris to enter into the pipe or pump station, bars are corroded to the point that up to 10% of the sectional area may be lost. Repair or replacement is required.	
		U	Trash racks are missing or damaged to the extent that they are no longer functional and must be replaced. (For example, more than 10% of the sectional area may be lost.)	
		N/A	There are no trash racks, or they are covered in the pump stations section of the report.	
13. Other Metallic Items	A	A	All metal parts are protected from corrosion damage and show no rust, damage, or deterioration that would cause a safety concern.	2021-0002 : The manhole cover was replaced since the last inspection. (A)
		M	Corrosion seen on metallic parts appears to be maintainable.	
		U	Metallic parts are severely corroded and require replacement to prevent failure, equipment damage, or safety issues.	
		N/A	There are no other significant metallic items.	
14. Riprap Revetments of Inlet/ Discharge Areas	A	A	No riprap displacement or stone degradation that could pose an immediate threat to the integrity of channel bank. Riprap intact with no woody vegetation present.	Justification: No issues noted.
		M	Minor riprap displacement or stone degradation that could pose an immediate threat to the integrity of the channel bank. Unwanted vegetation must be cleared or sprayed with an appropriate herbicide.	
		U	Significant riprap displacement, exposure of bedding, or stone degradation observed. Scour activity is undercutting banks, eroding embankments, or impairing channel flows by causing turbulence or shoaling. Rock protection is hidden by dense brush, trees, or grasses.	
		N/A	There is no riprap protecting this feature of the segment / system, or riprap is discussed in another section.	
15. Revetments other than Riprap	NA	A	No riprap displacement or stone degradation that could pose an immediate threat to the integrity of channel bank. Riprap intact with no woody vegetation present.	
		M	Minor riprap displacement or stone degradation that could pose an immediate threat to the integrity of the channel bank. Unwanted vegetation must be cleared or sprayed with an appropriate herbicide.	
		U	Significant riprap displacement, exposure of bedding, or stone degradation observed. Scour activity is undercutting banks, eroding embankments, or impairing channel flows by causing turbulence or shoaling. Rock protection is hidden by dense brush, trees, or grasses.	
		N/A	There are no such revetments protecting this feature of the segment / system.	

Key: A = Acceptable. M = Minimally Acceptable; Maintenance is required. U = Unacceptable. N/A = Not Applicable. FDR = Flood Damage Reduction

Controlled Unclassified Information (CUI): This document contains levee information that shall not be released in an uncontrolled manner

**Flood Damage Reduction Segments / Systems
Inspection Report**

**Interior Drainage System
Page 4 of 4**

Pump Stations

For use during Initial and Continuing Eligibility Inspections of pump stations

Rated Item	Rating	Rating Guidelines		Location/Remarks/Recommendations
1. Pump Stations Operating, Maintenance, Training, & Inspection Records	A	A	Operation, maintenance and inspection records are present at the pump station and are being used and updated, and personnel have been trained in pump station operations. Names and last training date shown in the record book.	Justification: Operation, maintenance and inspection records are present at the pump station and are being used and updated, and personnel have been trained in pump station operations.
		M	Operation, maintenance and inspection records are present but not adequately used and updated.	
		U	No operation, maintenance and inspection records are present, or refresher training for personnel has not been conducted.	
2. Pump Station Operations and Maintenance Equipment Manuals	A	A	Operation and Maintenance Equipment Manuals and/or posted operating instructions are present and updated as required, and adequately cover all pertinent pump station features. O&M manuals include points of contact for manufacturers and suppliers of major equipment used in the facility.	2021-0024 : PS-BS: Manuals present on site. (A)
		M	Operation and Maintenance Equipment Manuals and/or posted operating instructions are present and adequately cover all pertinent pump station features. However, they are incomplete and the necessary updates have not been made.	
		U	Operation and Maintenance Equipment Manuals are not available.	
3. Safety Compliance	A	A	Safety compliance inspection reports by applicable local, state, or federal agencies available for review.	2021-0020 : PS-BS: Arc flash labels present. (A)
		M	No safety compliance inspection reports are available for review.	
4. Communications (A or M only)	A	A	A telephone, cellular phone, two-way radio, or similar device is available to pump station operator and maintenance personnel.	2021-0022 : PS-BS: Communication present and working. (A)
		M	A telephone, cellular phone, two-way radio, or similar device is not available to pump station operator and maintenance personnel.	
5. Plant Building	A	A	The building is in good structural condition with no major foundation settlement problems. The roof is not leaking, intake & exhaust louvers are clear of debris, fans are operational, etc.	2021-0026 : PS-BS: No issues. (A)
		M	There are minor structural defects, minimal foundation settlement, leaks, or other conditions noted that need repair. Defects do not threaten the structural integrity or stability of the building, and will not impact pumping operations.	
		U	The structural integrity or stability of the building is threatened, or there is damage to the building that threatens safety of the operator or impacts pumping operations.	
6. Fencing and Gates	M	A	Fencing is in good condition and provides protection against falling or unauthorized access. Gates open and close freely, locks are in place, and there is little corrosion on metal parts.	2021-0006 : PS-BS: Fence in good condition. (A) 2021-0018 : PS-BS: Fence eroding away. (M)
		M	Fencing or gates are damaged or corroded but appear to be maintainable. Locks may be missing or damaged.	
		U	Fencing and gates are damaged or corroded to the point that replacement is required, or potentially dangerous features are not secured.	
		N/A	There are no features noted that require safety fencing.	

Key: A = Acceptable. M = Minimally Acceptable; Maintenance is required. U = Unacceptable. N/A = Not Applicable. FDR = Flood Damage Reduction

Pump Stations

For use during Initial and Continuing Eligibility Inspections of pump stations

Rated Item	Rating	Rating Guidelines		Location/Remarks/Recommendations
7. Pumps	A	A	All pumps are properly maintained and lubricated. Systems are periodically tested and documented for review. No vibration, cavitation noises or unusual sounds are noted when the pump is operated. Bearing temperature sensor records don't indicate any problems.	2021-0012 : PS-BS: Pumps were bumped and working. (A)
		M	Minor deficiencies noted that need to be closely monitored or repaired, such as the presence of slight vibrations, leakage of packing gland, bearing temperature sensors are inoperable or no record is present. However, the pumps are operational and are expected to perform through the next period of usage.	
		U	Major deficiencies identified that may significantly reduce pumping operations. For example, bearing sensor records indicate problems, excessive vibration noted, impellers are badly corroded, or there are eroded or missing blades.	
8. Motors, Engines, Fans, Gear Reducers, Back Stop Devices, etc.	A	A	All items are operational. Preventative maintenance and lubrication is being performed and the system is periodically subjected to performance testing. Instrumentation, alarms, bearing sensors and auto shutdowns are operational.	Justification: No issues noted.
		M	Systems have minor deficiencies, but are operational and will function adequately through the next flood. Bearing sensors are not operational.	
		U	One or more of the primary motors or systems is not operational, or noted deficiencies have not been corrected.	
9. Sumps / Wet well	M	A	Clear of debris, sediment, or other obstructions. Procedures are in place to remove debris accumulation during operation.	2021-0010 : PS-BS: Lots of debris in well. (M)
		M	Debris, sediment, or other obstructions may be present and must be removed, but the sump/ wet well will function as intended during the next flood. Procedures are in place to remove debris accumulation during operation.	
		U	Large debris or excessive silt present which will hinder or damage pumps during operation, or no procedures established to remove debris accumulation during operation.	
10. Mechanical Operating Trash Rakes	NA	A	Drive chain, bearing, gear reducers, and other components are in good operating condition and are being properly maintained.	
		M	The trash rake is in need of maintenance, but is still operational.	
		U	Trash rake not operational or deficiencies will inhibit operations during the next flood event.	
		N/A	There are no mechanical trash rakes.	
11. Non-Mechanical Trash Racks	A	A	Trash racks are fastened in place and properly maintained.	Justification: No issues noted.
		M	Trash racks are in place but are unfastened or have bent bars that allow debris to enter into the pipe or pump station, bars are corroded to the point that up to 10% of the sectional area may be lost. Repair or replacement is required.	
		U	Trash racks are missing or damaged to the extent that they are no longer functional and must be replaced. (For example, more than 10% of the sectional area may be lost.)	
		N/A	There are no trash racks, or they are covered in the pump stations section of the report.	

Key: A = Acceptable. M = Minimally Acceptable; Maintenance is required. U = Unacceptable. N/A = Not Applicable. FDR = Flood Damage Reduction

Controlled Unclassified Information (CUI): This document contains levee information that shall not be released in an uncontrolled manner

**Flood Damage Reduction Segments / Systems
Inspection Report**

**Pump Stations
Page 2 of 4**

Pump Stations

For use during Initial and Continuing Eligibility Inspections of pump stations

Rated Item	Rating	Rating Guidelines		Location/Remarks/Recommendations
12. Fuel System for Pump Engines	A	A	Fuel system is operational, day tank present and operational, fuel fresh and rotated regularly.	Justification: No issues noted.
		M	Fuel system is operational and of adequate capacity, but day tank is missing or fuel is not fresh and rotated regularly.	
		U	Fuel system not functional.	
		N/A	No fuel system.	
13. Power Source	A	A	The normal power source and backup generators, if installed, are operational, properly exercised and well maintained. Surge protection, grounding, lightning protection, transformers, and automatic/manual transfer of main power to backup system is working.	Justification: No issues noted.
		M	Normal power source and backup units, if applicable, are operational with minor discrepancies or maintenance, inspection and exercising record is present but not up to date. Preventative maintenance or repairs are required.	
		U	Normal power source or generators are not operational and must be repaired; or generator, if required, is not on site.	
14. Electrical Systems	A	A	Operational and maintained free of damage, corrosion, and debris. Preventative maintenance and system testing is being performed periodically.	Justification: No issues noted.
		M	Operational with minor discrepancies. Preventative maintenance or repairs are required, but the components are expected to function adequately during the next flood event.	
		U	Components of the electrical system will not function adequately during the next flood event and must be replaced.	
15. Megger Testing on Pump Motors and Critical Power Cables	A	A	Results of megger tests on pump motors or critical power cables show that the insulation meets manufacturer's or industry standards. Tested within the last year.	Justification: No issues noted.
		M	Megger testing not conducted within the past year. If megger tests on pump motors indicate that insulation resistance is below the manufacturer's or industry standard, but the resistance can be corrected with proper application of heat, this is minimally acceptable. (The application of heat does not relate to critical power cables.)	
		U	Megger tests not conducted within past two years, or tests indicate that insulation resistance is low enough that the equipment will not be able to meet design standards of operation; or evidence of arcing or shorting is detected visually.	
16. Enclosures, Panels, Conduit and Ducts	M	A	All enclosures, panels, conduits, and ducts are protected from corrosion damage and show no rust, damage, or deterioration that would cause a safety concern.	2021-0014 : PS-BS: Missing covers on box. (M) 2021-0016 : PS-BS: Conduits and panel good but lots of debris. (A)
		M	Minor surface corrosion which appears to be maintainable. Cleaning and painting required.	
		U	Severely corroded and must be replaced to prevent failure, equipment damage, or safety issues.	
17. Intake and Discharge Pipelines	A	A	Intake and discharge pipelines have no corrosion and paint is intact, except for minor touch up required. Pipe couplings and anchors have no leakage or corrosion.	Justification: No issues noted.
		M	Intake and discharge pipelines have minor corrosion and repair and painting is required. Pipe coupling with anchors have minor leakage, corrosion and require bolts to be tightened.	
		U	Intake and discharge pipelines have major corrosion and replacement is required. Pipe coupling with anchors have major leakage and is heavily corroded and requires replacement.	

Key: A = Acceptable. M = Minimally Acceptable; Maintenance is required. U = Unacceptable. N/A = Not Applicable. FDR = Flood Damage Reduction

Controlled Unclassified Information (CUI): This document contains levee information that shall not be released in an uncontrolled manner

**Flood Damage Reduction Segments / Systems
Inspection Report**

**Pump Stations
Page 3 of 4**

Pump Stations

For use during Initial and Continuing Eligibility Inspections of pump stations

Rated Item	Rating	Rating Guidelines		Location/Remarks/Recommendations
18. Sluice/ Slide Gates	A	A	Gates open and close freely to a tight seal or minor leakage. Gate operators are in good working condition and are properly maintained. Sill is free of sediment and other obstructions. Gates and lifters have been maintained and are free of corrosion. Documentation provided during the inspection.	2021-0008 : PS-BS: No key for drill to lower sluice gate and garbage because it is hand cranked. (A)
		M	Gates and/or operators have been damaged or have minor corrosion, and open and close with resistance or binding. Leakage quantity is controllable, but maintenance is required. Sill is free of sediment and other obstructions.	
		U	Gates do not open or close and/or operators do not function. Gate, stem, lifter and/or guides may be damaged or have major corrosion.	
		N/A	There are no sluice/ slide gates.	
19. Flap Gates/ Flap Valves/ Pinch Valves	A	A	Gates/ valves open and close easily with minimal leakage, have no corrosion damage, and have been exercised and lubricated as required.	Justification: No issues noted.
		M	Gates/ valves will not fully open or close because of obstructions that can be easily removed, or have minor corrosion damage that requires maintenance.	
		U	Gates/ valves are missing, have been damaged, or have deteriorated to the point that they need to be replaced.	
		N/A	There are no gates on discharge lines from pump station.	
20. Cranes	NA	A	Cranes operational and have been inspected and load tested in accordance with applicable standards within the last year. Documentation is on hand.	
		M	Cranes have not been inspected or operationally tested within the past year, or there are visible signs of corrosion, oil leakage, etc, requiring maintenance.	
		U	Cranes are not operational, and this may prevent the pump station from functioning as required. No documentation available on cranes.	
		N/A	There are no cranes.	
21. Other Metallic Items (Equipment, Ladders, Platform Anchors, etc)	A	A	All metal parts are protected from corrosion damage and show no rust, damage, or deterioration that would cause a safety concern.	Justification: No issues noted.
		M	Corrosion seen on metallic parts appears to be maintainable.	
		U	Metallic parts are severely corroded and require replacement to prevent failure, equipment damage, or safety issues.	
		N/A	There are no other significant metallic items.	

Key: A = Acceptable. M = Minimally Acceptable; Maintenance is required. U = Unacceptable. N/A = Not Applicable. FDR = Flood Damage Reduction

Controlled Unclassified Information (CUI): This document contains levee information that shall not be released in an uncontrolled manner

**Flood Damage Reduction Segments / Systems
Inspection Report**

**Pump Stations
Page 4 of 4**

Photos

For use during Initial and Continuing Eligibility Inspections of levee segments / systems



Inspect ID: 2021-0057 **Title:** 2604000005_CELRC_2021_A_0057_1_20210430T163818.jpg **Rated Item:** 1. Unwanted Vegetation Growth **Caption:** Minimally Acceptable - Tall vegetation near the landside toe.



Inspect ID: 2021-0061 **Title:** 2604000005_CELRC_2021_A_0061_1_20210430T164026.jpg **Rated Item:** 1. Unwanted Vegetation Growth **Caption:** Minimally Acceptable - Trees near the riverside toe.

Photos

For use during Initial and Continuing Eligibility Inspections of levee segments / systems

	<p>Inspect ID: 2021-0103 Title: 2604000005_CELRC_2021_A_0103_1_20210430T170358.jpg Rated Item: 1. Unwanted Vegetation Growth Caption: Minimally Acceptable - Tall vegetation along landside toe.</p>
	<p>Inspect ID: 2021-0011 Title: 2604000005_CELRC_2021_A_0011_1_20210430T155328.jpg Rated Item: 3. Encroachments Caption: Minimally Acceptable - Debris on riverside slope.</p>

Photos

For use during Initial and Continuing Eligibility Inspections of levee segments / systems



Inspect ID: 2021-0023 **Title:** 2604000005_CELRC_2021_A_0023_1_20210430T161003.jpg **Rated Item:** 3. Encroachments **Caption:** Minimally Acceptable - Debris on riverside toe.



Inspect ID: 2021-0027 **Title:** 2604000005_CELRC_2021_A_0027_1_20210430T161326.jpg **Rated Item:** 3. Encroachments **Caption:** Minimally Acceptable - Debris on riverside toe.

Photos

For use during Initial and Continuing Eligibility Inspections of levee segments / systems



Inspect ID: 2021-0033 **Title:** 2604000005_CELRC_2021_A_0033_1_20210430T161915.jpg **Rated Item:** 3. Encroachments **Caption:** Minimally Acceptable - Debris on landside toe.



Inspect ID: 2021-0039 **Title:** 2604000005_CELRC_2021_A_0039_1_20210430T162151.jpg **Rated Item:** 3. Encroachments **Caption:** Minimally Acceptable - Debris on landside slope.

Photos

For use during Initial and Continuing Eligibility Inspections of levee segments / systems





Inspect ID: 2021-0085 **Title:** 2604000005_CELRC_2021_A_0085_1_20210430T165337.jpg **Rated**
Item: 3. Encroachments **Caption:** Minimally Acceptable - Debris on crest.



Inspect ID: 2021-0113 **Title:** 2604000005_CELRC_2021_A_0113_1_20210430T170852.jpg **Rated**
Item: 3. Encroachments **Caption:** Minimally Acceptable - Debris and drift wood at the landside toe.

Photos

For use during Initial and Continuing Eligibility Inspections of levee segments / systems

	<p>Inspect ID: 2021-0127 Title: 2604000005_CELRC_2021_A_0127_1_20210430T171620.jpg Rated Item: 6. Erosion/ Bank Caving Caption: Minimally Acceptable - Minor erosion on riverside toe, 6" scarp.</p>
	<p>Inspect ID: 2021-0005 Title: 2604000005_CELRC_2021_A_0005_1_20210430T154612.jpg Rated Item: 8. Depressions/ Rutting Caption: Acceptable - Rutting on riverside slope.</p>

Photos

For use during Initial and Continuing Eligibility Inspections of levee segments / systems



Inspect ID: 2021-0007 **Title:** 2604000005_CELRC_2021_A_0007_1_20210430T154716.jpg **Rated Item:** 8. Depressions/ Rutting **Caption:** Minimally Acceptable - Deep ruts on landside toe.



Inspect ID: 2021-0009 **Title:** 2604000005_CELRC_2021_A_0009_1_20210430T155147.jpg **Rated Item:** 8. Depressions/ Rutting **Caption:** Minimally Acceptable - Rutting on landside toe.

Photos

For use during Initial and Continuing Eligibility Inspections of levee segments / systems



Inspect ID: 2021-0015 **Title:** 2604000005_CELRC_2021_A_0015_1_20210430T155740.jpg **Rated Item:** 8. Depressions/ Rutting **Caption:** Acceptable - Rutting on riverside slope.



Inspect ID: 2021-0021 **Title:** 2604000005_CELRC_2021_A_0021_1_20210430T160723.jpg **Rated Item:** 8. Depressions/ Rutting **Caption:** Minimally Acceptable - Deep rutting on riverside slope.

Photos

For use during Initial and Continuing Eligibility Inspections of levee segments / systems



Inspect ID: 2021-0025 **Title:** 2604000005_CELRC_2021_A_0025_1_20210430T161109.jpg **Rated Item:** 8. Depressions/ Rutting **Caption:** Minimally Acceptable - Depression on landside slope.



Inspect ID: 2021-0031 **Title:** 2604000005_CELRC_2021_A_0031_1_20210430T161824.jpg **Rated Item:** 8. Depressions/ Rutting **Caption:** Minimally Acceptable - Deep rutting on riverside slope.

Photos

For use during Initial and Continuing Eligibility Inspections of levee segments / systems



Inspect ID: 2021-0035 **Title:** 2604000005_CELRC_2021_A_0035_1_20210430T162021.jpg **Rated Item:** 8. Depressions/ Rutting **Caption:** Minimally Acceptable - Deep rutting on landside crest.



Inspect ID: 2021-0049 **Title:** 2604000005_CELRC_2021_A_0049_1_20210430T163319.jpg **Rated Item:** 8. Depressions/ Rutting **Caption:** Minimally Acceptable - Deep ruts on riverside toe.

Photos

For use during Initial and Continuing Eligibility Inspections of levee segments / systems

	<p>Inspect ID: 2021-0051 Title: 2604000005_CELRC_2021_A_0051_1_20210430T163358.jpg Rated Item: 8. Depressions/ Rutting Caption: Minimally Acceptable - Deep hole in crest.</p>
	<p>Inspect ID: 2021-0053 Title: 2604000005_CELRC_2021_A_0053_1_20210430T163447.jpg Rated Item: 8. Depressions/ Rutting Caption: Minimally Acceptable - Deep ruts and ponding on riverside toe.</p>

Photos

For use during Initial and Continuing Eligibility Inspections of levee segments / systems



Inspect ID: 2021-0059 **Title:** 2604000005_CELRC_2021_A_0059_1_20210430T163912.jpg **Rated Item:** 8. Depressions/ Rutting **Caption:** Minimally Acceptable - Deep ruts and ponding on landside toe.



Inspect ID: 2021-0063 **Title:** 2604000005_CELRC_2021_A_0063_1_20210430T164129.jpg **Rated Item:** 8. Depressions/ Rutting **Caption:** Minimally Acceptable - Rutting and ponding alongside the landside toe.

Photos

For use during Initial and Continuing Eligibility Inspections of levee segments / systems





Inspect ID: 2021-0067 **Title:** 2604000005_CELRC_2021_A_0067_1_20210430T164355.jpg **Rated Item:** 8. Depressions/ Rutting **Caption:** Acceptable - Minor rutting on crest of levee.



Inspect ID: 2021-0079 **Title:** 2604000005_CELRC_2021_A_0079_1_20210430T165009.jpg **Rated Item:** 8. Depressions/ Rutting **Caption:** Minimally Acceptable - Rutting alongside the riverside toe.

Photos

For use during Initial and Continuing Eligibility Inspections of levee segments / systems

	<p>Inspect ID: 2021-0083 Title: 2604000005_CELRC_2021_A_0083_1_20210430T165209.jpg Rated Item: 8. Depressions/ Rutting Caption: Minimally Acceptable - Multiple ruts on riverside slope.</p>
	<p>Inspect ID: 2021-0087 Title: 2604000005_CELRC_2021_A_0087_1_20210430T165437.jpg Rated Item: 8. Depressions/ Rutting Caption: Minimally Acceptable - Deep ruts on riverside slope.</p>

Photos

For use during Initial and Continuing Eligibility Inspections of levee segments / systems





Inspect ID: 2021-0101 **Title:** 2604000005_CELRC_2021_A_0101_1_20210430T170305.jpg **Rated Item:** 8. Depressions/ Rutting **Caption:** Minimally Acceptable - Rutting on the crest.



Inspect ID: 2021-0105 **Title:** 2604000005_CELRC_2021_A_0105_1_20210430T170427.jpg **Rated Item:** 8. Depressions/ Rutting **Caption:** Minimally Acceptable - Rutting on landside slope.

Photos

For use during Initial and Continuing Eligibility Inspections of levee segments / systems

	Inspect ID: 2021-0107 Title: 2604000005_CELRC_2021_A_0107_1_20210430T170512.jpg Rated Item: 8. Depressions/ Rutting Caption: Minimally Acceptable - Deep rut and ponding on riverside toe.
	Inspect ID: 2021-0109 Title: 2604000005_CELRC_2021_A_0109_1_20210430T170614.jpg Rated Item: 8. Depressions/ Rutting Caption: Minimally Acceptable - Deep ruts and ponding on landside toe.

Photos

For use during Initial and Continuing Eligibility Inspections of levee segments / systems



Inspect ID: 2021-0121 **Title:** 2604000005_CELRC_2021_A_0121_1_20210430T171341.jpg **Rated Item:** 8. Depressions/ Rutting **Caption:** Minimally Acceptable - Depression on riverside slope and toe.



Inspect ID: 2021-0129 **Title:** 2604000005_CELRC_2021_A_0129_1_20210430T171705.jpg **Rated Item:** 8. Depressions/ Rutting **Caption:** Minimally Acceptable - Deep ruts and ponding on riverside toe.

Photos

For use during Initial and Continuing Eligibility Inspections of levee segments / systems



Inspect ID: 2021-0131 **Title:** 2604000005_CELRC_2021_A_0131_1_20210430T171743.jpg **Rated Item:** 8. Depressions/ Rutting **Caption:** Minimally Acceptable - Deep ruts and ponding on riverside toe.



Inspect ID: 2021-0135 **Title:** 2604000005_CELRC_2021_A_0135_1_20210430T172025.jpg **Rated Item:** 8. Depressions/ Rutting **Caption:** Minimally Acceptable - Deep ruts and ponding on landside toe.



Photos

For use during Initial and Continuing Eligibility Inspections of levee segments / systems

	<p>Inspect ID: 2021-0013 Title: 2604000005_CELRC_2021_A_0013_2_20210430T155601.jpg Rated Item: 10. Animal Control Caption: Acceptable - Animal burrow mounds typical along landside slope.</p>
	<p>Inspect ID: 2021-0073 Title: 2604000005_CELRC_2021_A_0073_1_20210430T164713.jpg Rated Item: 10. Animal Control Caption: Minimally Acceptable - Animal burrow 3.5 ft deep on landside slope. The animal burrows go upslope and downslope.</p>

Photos

For use during Initial and Continuing Eligibility Inspections of levee segments / systems

	<p>Inspect ID: 2021-0075 Title: 2604000005_CELRC_2021_A_0075_1_20210430T164813.jpg Rated Item: 10. Animal Control Caption: Acceptable - Collapsed animal burrow on landside slope.</p>
	<p>Inspect ID: 2021-0089 Title: 2604000005_CELRC_2021_A_0089_1_20210430T165552.jpg Rated Item: 10. Animal Control Caption: Acceptable - Animal burrow, 6" deep, on crest.</p>

Photos

For use during Initial and Continuing Eligibility Inspections of levee segments / systems

	Inspect ID: 2021-0111 Title: 2604000005_CELRC_2021_A_0111_1_20210430T170713.jpg Rated Item: 10. Animal Control Caption: Minimally Acceptable - Multiple animal burrows on riverside toe. Deepest one is 1 ft.
	Inspect ID: 2021-0115 Title: 2604000005_CELRC_2021_A_0115_1_20210430T171020.jpg Rated Item: 10. Animal Control Caption: Minimally Acceptable - Multiple animal burrows, 6" deep, on riverside toe.

Photos

For use during Initial and Continuing Eligibility Inspections of levee segments / systems



Inspect ID: 2021-0117 **Title:** 2604000005_CELRC_2021_A_0117_1_20210430T171051.jpg **Rated Item:** 10. Animal Control **Caption:** Minimally Acceptable - Animal burrow, 1.5 ft deep, on riverside toe and slope.



Inspect ID: 2021-0119 **Title:** 2604000005_CELRC_2021_A_0119_1_20210430T171228.jpg **Rated Item:** 10. Animal Control **Caption:** Minimally Acceptable - Collapsed and non collapsed animal burrows on riverside slope.

Photos

For use during Initial and Continuing Eligibility Inspections of levee segments / systems



Inspect ID: 2021-0123 **Title:** 2604000005_CELRC_2021_A_0123_1_20210430T171420.jpg **Rated Item:** 10. Animal Control **Caption:** Minimally Acceptable - Animal burrow 10" deep on riverside toe.



Inspect ID: 2021-0125 **Title:** 2604000005_CELRC_2021_A_0125_1_20210430T171520.jpg **Rated Item:** 10. Animal Control **Caption:** Minimally Acceptable - Animal burrow 14 inches deep on riverside toe.

Photos

For use during Initial and Continuing Eligibility Inspections of levee segments / systems



Inspect ID: 2021-0029 **Title:** 2604000005_CELRC_2021_A_0029_1_20210430T161458.jpg **Rated Item:** 1. Unwanted Vegetation Growth **Caption:** Acceptable - Vegetation on riverside.



Inspect ID: 2021-0095 **Title:** 2604000005_CELRC_2021_A_0095_1_20210430T165958.jpg **Rated Item:** 2. Encroachments **Caption:** Minimally Acceptable - Debris on riverside of the flood wall.

Photos

For use during Initial and Continuing Eligibility Inspections of levee segments / systems



Inspect ID: 2021-0097 **Title:** 2604000005_CELRC_2021_A_0097_1_20210430T170100.jpg **Rated Item:** 3. Closure Structures (Stop Log Closures and Gates) (A or U only) **Caption:** Acceptable - Missing slide gate in storage at RR East.



Inspect ID: 2021-0041 **Title:** 2604000005_CELRC_2021_A_0041_1_20210430T162343.jpg **Rated Item:** 4. Concrete Surfaces **Caption:** Minimally Acceptable - Cracking on top of floodwall leading to monolith joint. Seal.



Photos

For use during Initial and Continuing Eligibility Inspections of levee segments / systems

	<p>Inspect ID: 2021-0043 Title: 2604000005_CELRC_2021_A_0043_1_20210430T162616.jpg Rated Item: 4. Concrete Surfaces Caption: Acceptable - Beginning signs of spalling on landside face. Monitor.</p>
	<p>Inspect ID: 2021-0047 Title: 2604000005_CELRC_2021_A_0047_1_20210430T163055.jpg Rated Item: 4. Concrete Surfaces Caption: Acceptable - Cracking spanning the height of the wall on riverside face. Monitor.</p>



Photos

For use during Initial and Continuing Eligibility Inspections of levee segments / systems

	Inspect ID: 2021-0045 Title: 2604000005_CELRC_2021_A_0045_1_20210430T162857.jpg Rated Item: 7. Monolith Joints Caption: Minimally Acceptable - Crack in monolith joint sealant exposing filler material underneath. Repair.
	Inspect ID: 2021-0093 Title: 2604000005_CELRC_2021_A_0093_1_20210430T165909.jpg Rated Item: 7. Monolith Joints Caption: Minimally Acceptable - Riverside joint sealant coming out of interlocks.

Photos

For use during Initial and Continuing Eligibility Inspections of levee segments / systems

	Inspect ID: 2021-0099 Title: 2604000005_CELRC_2021_A_0099_1_20210430T170212.jpg Rated Item: 7. Monolith Joints Caption: Minimally Acceptable - Riverside sealant coming out of interlocks.
	Inspect ID: 2021-0003 Title: 2604000005_CELRC_2021_A_0003_1_20210430T154346.jpg Rated Item: 1. Vegetation and Obstructions Caption: Minimally Acceptable - Small trees and tall vegetation in south ditch.

Photos

For use during Initial and Continuing Eligibility Inspections of levee segments / systems



Inspect ID: 2021-0019 **Title:** 2604000005_CELRC_2021_A_0019_1_20210430T160334.jpg **Rated Item:** 1. Vegetation and Obstructions **Caption:** Acceptable - Small trees and vegetation in ditch



Inspect ID: 2021-0037 **Title:** 2604000005_CELRC_2021_A_0037_1_20210430T162104.jpg **Rated Item:** 1. Vegetation and Obstructions **Caption:** Minimally Acceptable - Tall vegetation in the ditch.

Photos

For use during Initial and Continuing Eligibility Inspections of levee segments / systems



Inspect ID: 2021-0017 **Title:** 2604000005_CELRC_2021_A_0017_1_20210430T160058.jpg **Rated Item:** 9. Culverts/ Discharge Pipes **Caption:** Minimally Acceptable - Damaged CMP



Inspect ID: 2021-0004 **Title:** 2604000005_CELRC_2021_A_0004_1_20210427T151346.jpg **Rated Item:** 11. Flap Gates/ Flap Valves/ Pinch Valves **Caption:** Minimally Acceptable - GB-4: There is a large amount of debris blocking the flap gate and a hearty amount of trash in the general area.

Photos

For use during Initial and Continuing Eligibility Inspections of levee segments / systems



Inspect ID: 2021-0002 **Title:** 2604000005_CELRC_2021_A_0002_1_20210427T150402.jpg **Rated Item:** 13. Other Metallic Items **Caption:** Acceptable - The manhole cover was replaced since the last inspection.



Inspect ID: 2021-0024 **Title:** 2604000005_CELRC_2021_A_0024_1_20210430T142738.jpg **Rated Item:** 2. Pump Station Operations and Maintenance Equipment Manuals **Caption:** Acceptable - PS-BS: Manuals present on site.

Photos

For use during Initial and Continuing Eligibility Inspections of levee segments / systems



Inspect ID: 2021-0020 **Title:** 2604000005_CELRC_2021_A_0020_1_20210430T142553.jpg **Rated Item:** 3. Safety Compliance **Caption:** Acceptable - PS-BS: Arc flash labels present.



Inspect ID: 2021-0022 **Title:** 2604000005_CELRC_2021_A_0022_1_20210430T142701.jpg **Rated Item:** 4. Communications (A or M only) **Caption:** Acceptable - PS-BS: Communication present and working.

Photos

For use during Initial and Continuing Eligibility Inspections of levee segments / systems



Inspect ID: 2021-0026 **Title:** 2604000005_CELRC_2021_A_0026_1_20210430T142833.jpg **Rated Item:** 5. Plant Building **Caption:** Acceptable - PS-BS: No issues.



Inspect ID: 2021-0006 **Title:** 2604000005_CELRC_2021_A_0006_1_20210430T141828.jpg **Rated Item:** 6. Fencing and Gates **Caption:** Acceptable - PS-BS: Fence in good condition.

Photos

For use during Initial and Continuing Eligibility Inspections of levee segments / systems



Inspect ID: 2021-0018 **Title:** 2604000005_CELRC_2021_A_0018_1_20210430T142442.jpg **Rated Item:** 6. Fencing and Gates **Caption:** Minimally Acceptable - PS-BS: Fence eroding away.



Inspect ID: 2021-0012 **Title:** 2604000005_CELRC_2021_A_0012_1_20210430T142141.jpg **Rated Item:** 7. Pumps **Caption:** Acceptable - PS-BS: Pumps were bumped and working.

Photos

For use during Initial and Continuing Eligibility Inspections of levee segments / systems



Inspect ID: 2021-0010 **Title:** 2604000005_CELRC_2021_A_0010_1_20210430T142053.jpg **Rated Item:** 9. Sumps/ Wet well **Caption:** Minimally Acceptable - PS-BS: Lots of debris in well.



Inspect ID: 2021-0014 **Title:** 2604000005_CELRC_2021_A_0014_1_20210430T142241.jpg **Rated Item:** 16. Enclosures, Panels, Conduit and Ducts **Caption:** Minimally Acceptable - PS-BS: Missing covers on box.

Photos

For use during Initial and Continuing Eligibility Inspections of levee segments / systems



Inspect ID: 2021-0016 **Title:**
2604000005_CELRC_2021_A_0016_1_20210430T142347.jpg **Rated**
Item: 16. Enclosures, Panels, Conduit and Ducts **Caption:** Acceptable -
PS-BS: Conduits and panel good but lots of debris.



Inspect ID: 2021-0008 **Title:**
2604000005_CELRC_2021_A_0008_1_20210430T142013.jpg **Rated**
Item: 18. Sluice/ Slide Gates **Caption:** Acceptable - PS-BS: No key for
drill to lower sluice gate and garbage because it is hand cranked.



**US Army Corps
of Engineers ®**

Flood Damage Reduction System 2605000004 / Segment 2604000005

Public Sponsor Pre-Inspection Form

The following information is to be provided by the levee district sponsor prior to an inspection. This information will be used to help evaluate the organizational capability of the levee district to manage the levee segment / system maintenance program.

1. Levee segment / system and sponsor: (name of the segment / system and levee sponsor) System 2605000004 / Segment 2604000005 CELRC		
2. Reporting period: (month/day/year to month/day/year) 04/01/2021 to 04/01/2021		
3. Summary of maintenance required by last inspection report: Vegetation, encroachments, rutting, animal activity, sheet pile sealant deterioration.		
4. Summary of maintenance performed this reporting period: Grass cutting, grease sluice gates, regular maintenance of pump stations on monthly basis.		
5. Summary of maintenance planned next reporting period: Same as above.		
6. Summary of changes to segment / system since last inspection: N/A		
7. Problems/ issues requiring the assistance of the US Army Corps of Engineers: N/A		

General Instructions for the Inspection of Flood Damage Reduction Segments / Systems

A. Purpose of USACE Inspections

The primary purpose of these inspections is to prevent loss of life and catastrophic damages; preserve the value of Federal investments, and to encourage non-Federal sponsors to bear responsibility for their own protection. Inspections should assure that Flood Damage Reduction structures and facilities are continually maintained and operated as necessary to obtain the maximum benefits. Inspections are also conducted to determine eligibility for Rehabilitation Assistance under authority of PL 84-99 for Federal and non-Federal systems. (ER 1130-2-530, ER 500-1-1)

B. Types of Inspections:

The Corps conducts several types of inspections of Flood Damage Reduction systems, as outlined below:

Initial Eligibility Inspections	Continuing Eligibility Inspections	
	Routine Inspections	Periodic Inspections
IEIs are conducted to determine whether a non-Federally constructed Flood Damage Reduction system meets the minimum criteria and standards set forth by the Corps for initial inclusion into the Rehabilitation and Inspection Program.	RIIs are intended to verify proper maintenance, owner preparedness, and component operation.	PIIs are intended to verify proper maintenance and component operation and to evaluate operational adequacy, structural stability, and safety of the system. Periodic Inspections evaluate the system's original design criteria vs. current design criteria to determine potential performance impacts, evaluate the current conditions, and compare the design loads and design analysis used against current design standards. This is to be done to identify components and features for the sponsor that need to be monitored more closely over time or corrected as needed. (Periodic Inspections are used as the basis of risk assessments.)

C. Inspection Boundaries:

Inspections should be conducted so as to rate each Flood Damage Reduction "Segment" of the system. The overall system rating will be the lowest segment rating in the system.

Project	System	Segment
A flood damage reduction project is made up of one or more flood damage reduction systems which were under the same authorization.	A flood damage reduction system is made up of one or more flood damage reduction segments which collectively provide flood damage reduction to a defined area. Failure of one segment within a system constitutes failure of the entire system. Failure of one system does not affect another system.	A flood damage reduction segment is defined as a discrete portion of a flood damage reduction system that is operated and maintained by a single entity. A flood damage reduction segment can be made up of one or more features (levee, floodwall, pump stations, etc).

D. Land Use Definitions:

The following three definitions are intended for use in determining minimum required inspection intervals and initial requirements for inclusion into the Rehabilitation and Inspection Program. Inspections should be considered for all systems that would result in significant environmental or economic impact upon failure regardless of specific land use.

Agricultural	Rural	Urban
Protected population in the range of zero to 5 households per square mile protected.	Protected population in the range of 6 to 20 households per square mile protected.	Greater than 20 households per square mile; major industrial areas with significant infrastructure investment. Some protected urban areas have no permanent population but may be industrial areas with high value infrastructure with no overnight population.

E. **Use of the Inspection Report Template:**

The report template is intended for use in all Army Corps of Engineers inspections of levee and floodwall systems and flood damage reduction channels. The section of the template labeled \"Initial Eligibility\" only needs to be completed during Initial Eligibility Inspections of Non-Federally constructed Flood Damage Reduction Systems. The section labeled \"General Items\" needs to be completed with every inspection, along with all other sections that correspond to features in the system. The section labeled \"Public Sponsor Pre-Inspection Report\" is intended for completion before the inspection, if possible.

F. **Individual Item / Component Ratings:**

Assessment of individual components rated during the inspection should be based on the criteria provided in the inspection report template, though inspectors may incorporate additional items into the report based on the characteristics of the system. The assessment of individual components should be based on the following definitions.

Acceptable Item	Minimally Acceptable Item	Unacceptable Item
The inspected item is in satisfactory condition, with no deficiencies, and will function as intended during the next flood event.	The inspected item has one or more minor deficiencies that need to be corrected. The minor deficiency or deficiencies will not seriously impair the functioning of the item as intended during the next flood event.	The inspected item has one or more serious deficiencies that need to be corrected. The serious deficiency or deficiencies will seriously impair the functioning of the item as intended during the next flood event.

G. **Overall Segment / System Ratings:**

Determination of the overall system rating is based on the definitions below. Note that an Unacceptable System Rating may be either based on an engineering determination that concluded that noted deficiencies would prevent the system from functioning as intended during the next flood event, or based on the sponsor's demonstrated lack of commitment or inability to correct serious deficiencies in a timely manner.

Acceptable System	Minimally Acceptable System	Unacceptable System
All items or components are rated as Acceptable.	One or more items are rated as Minimally Acceptable or one or more items are rated as Unacceptable and an engineering determination concludes that the Unacceptable items would not prevent the segment / system from performing as intended during the next flood event.	One or more items are rated as Unacceptable and would prevent the segment / system from performing as intended, or a serious deficiency noted in past inspections (which had previously resulted in a minimally acceptable system rating) has not been corrected within the established timeframe, not to exceed two years.

H. **Eligibility for PL84-99 Rehabilitation Assistance:**

Inspected systems that are not operated and maintained by the Federal government may be Active in the Corps' Rehabilitation and Inspection Program (RIP) and eligible for rehabilitation assistance from the Corps as defined below:

If the Overall System Rating is Acceptable	If the Overall System Rating is Minimally Acceptable	If the Overall System Rating is Unacceptable
The system is active in the RIP and eligible for PL84-99 rehabilitation assistance.	The system is Active in the RIP during the time that it takes to make needed corrections. Active systems are eligible for rehabilitation assistance. However, if the sponsor does not present USACE with proof that serious deficiencies (which had previously resulted in a minimally acceptable system rating) were corrected within the established timeframe, then the system will become Inactive in the RIP.	The system is Inactive in the RIP, and the status will remain Inactive until the sponsor presents USACE with proof that all items rated Unacceptable have been corrected. Inactive systems are ineligible for rehabilitation assistance.

I. Reporting:

After the inspection, the Corps is responsible for assembling an inspection report (or a summary report if it was a Periodic Inspection) including the following information:

- a. All sections of the report template used during the inspection, including the cover and pre-inspection materials. (Supplemental data collected, and any sections of the template that weren't used during the inspection do not need to be included with the report.)
- b. Photos of the general system condition and noted deficiencies.
- c. A plan view drawing of the system, with stationing, to reference locations of items rated less than acceptable.
- d. The relative importance of the identified maintenance issues should be specified in the transmittal letter.
- e. If the Overall System Rating is Minimally Acceptable, the report needs to establish a timeframe for correction of serious deficiencies noted (not to exceed two years) and indicate that if these items are not corrected within the required timeframe, the system will be rated as Unacceptable and made Inactive in the Rehabilitation Inspection Program.

J. Notification:

Reports are to be disseminated as follows within 30 days of the inspection date.

If the Overall System Rating is Acceptable	If the Overall System Rating is Minimally Acceptable	If the Overall System Rating is Unacceptable
Reports need to be provided to the local sponsor and the county emergency management agency.	Reports need to be provided to the local sponsor, state emergency management agency, county emergency management agency, and to the FEMA region.	Reports need to be provided to the local sponsor, state emergency management agency, county emergency management agency, FEMA region, and to the Congressional delegation within 30 days of the inspection.

National Levee Database

NLD

For Official Use Only

LEVEE INSPECTION MAPBOOK

Levee Segment Gary Burr St

NLD Levee Segment ID
2604000005

Location
Burr Street

Inspection Type
Periodic

Start Date
30-Apr-2021

End Date
30-Apr-2021

Inspected By
Jeremy Harris, Yuki Galisanao

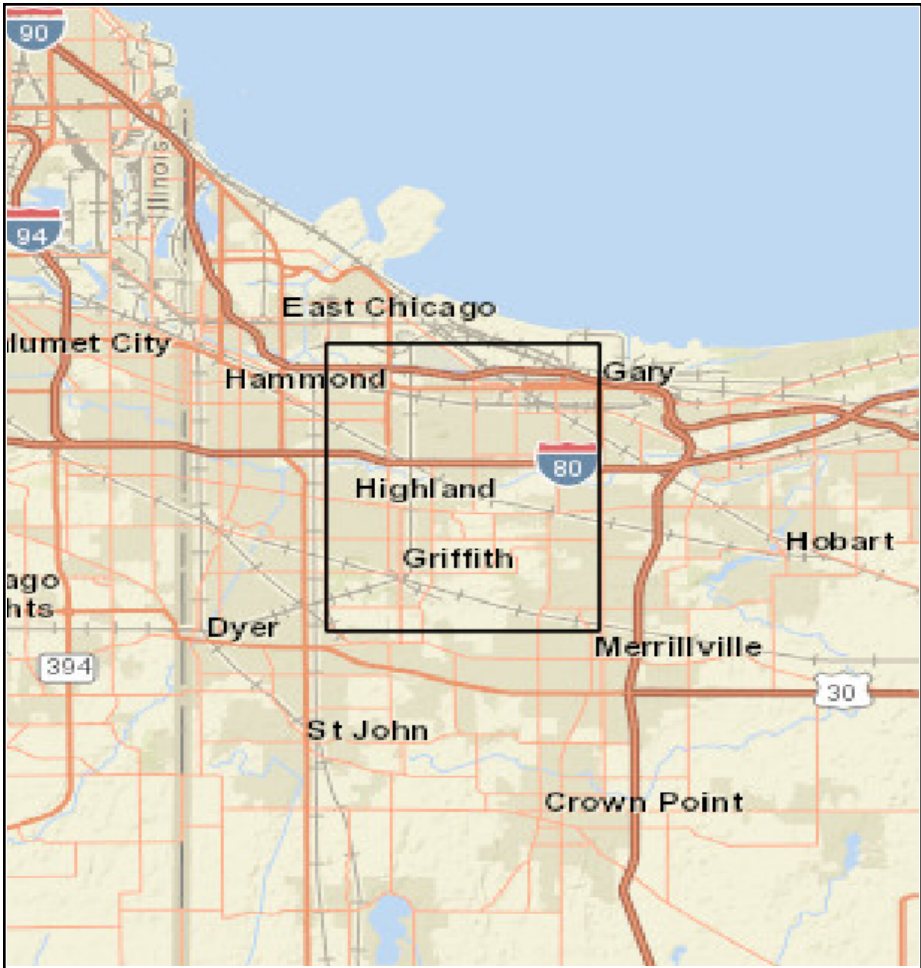


US Army Corps
of Engineers

SHEET INDEX

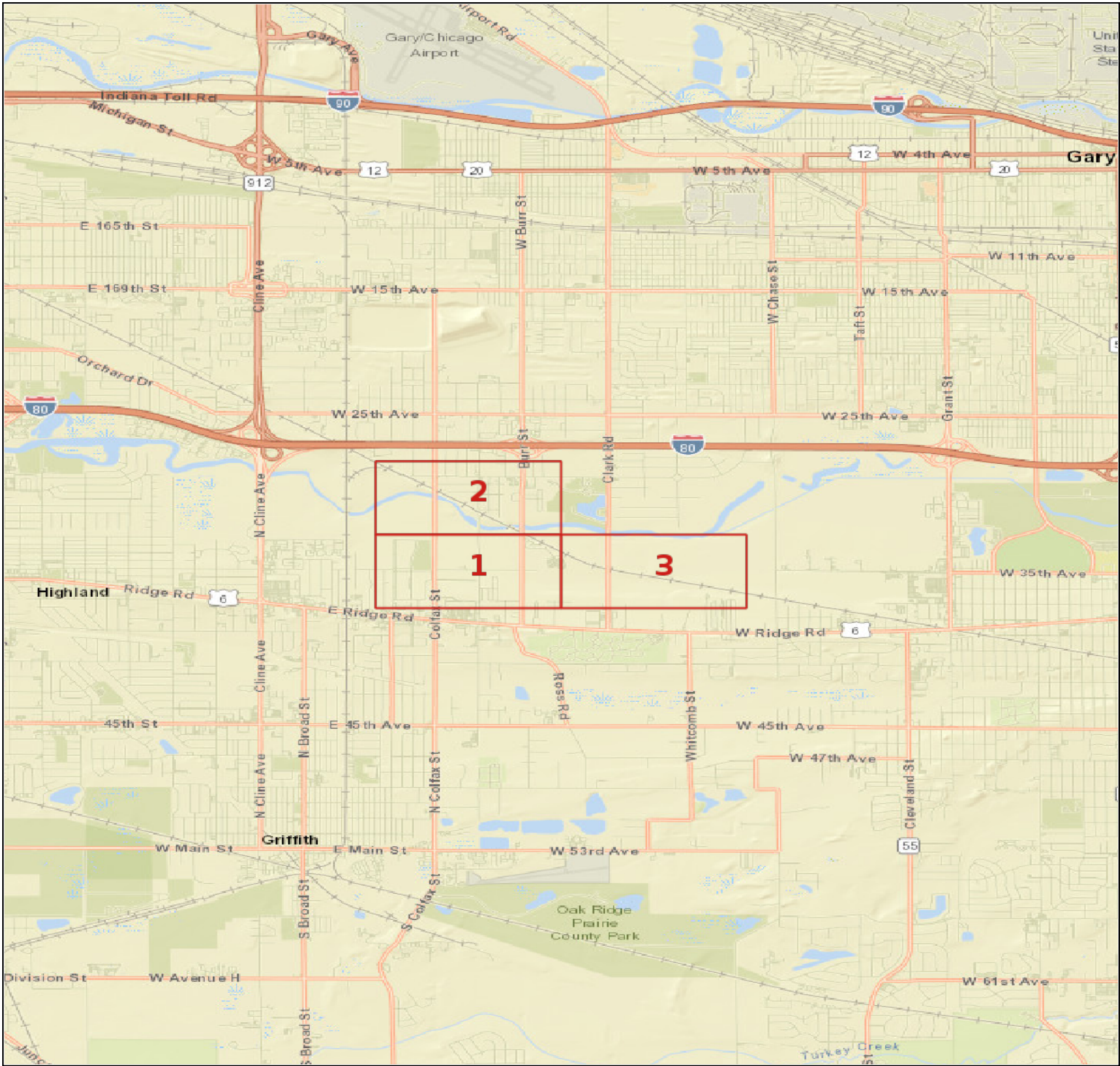
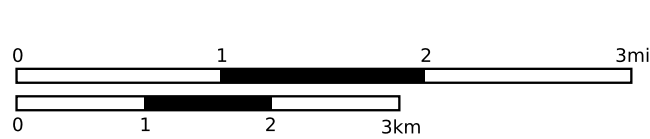
Levee: Gary Burr St

WARNING: This document is FOR OFFICIAL USE ONLY (FOUO)
It contains information that may be exempt from public release under the Freedom of Information Act (5 USC 552). It is to be controlled, stored, handled, transmitted, distributed, and disposed of in accordance with USACE policy relating to FOUO information and it is not to be released to the public or other personnel who do not have a valid \"need to know\" without prior written approval of an authorized USACE official.

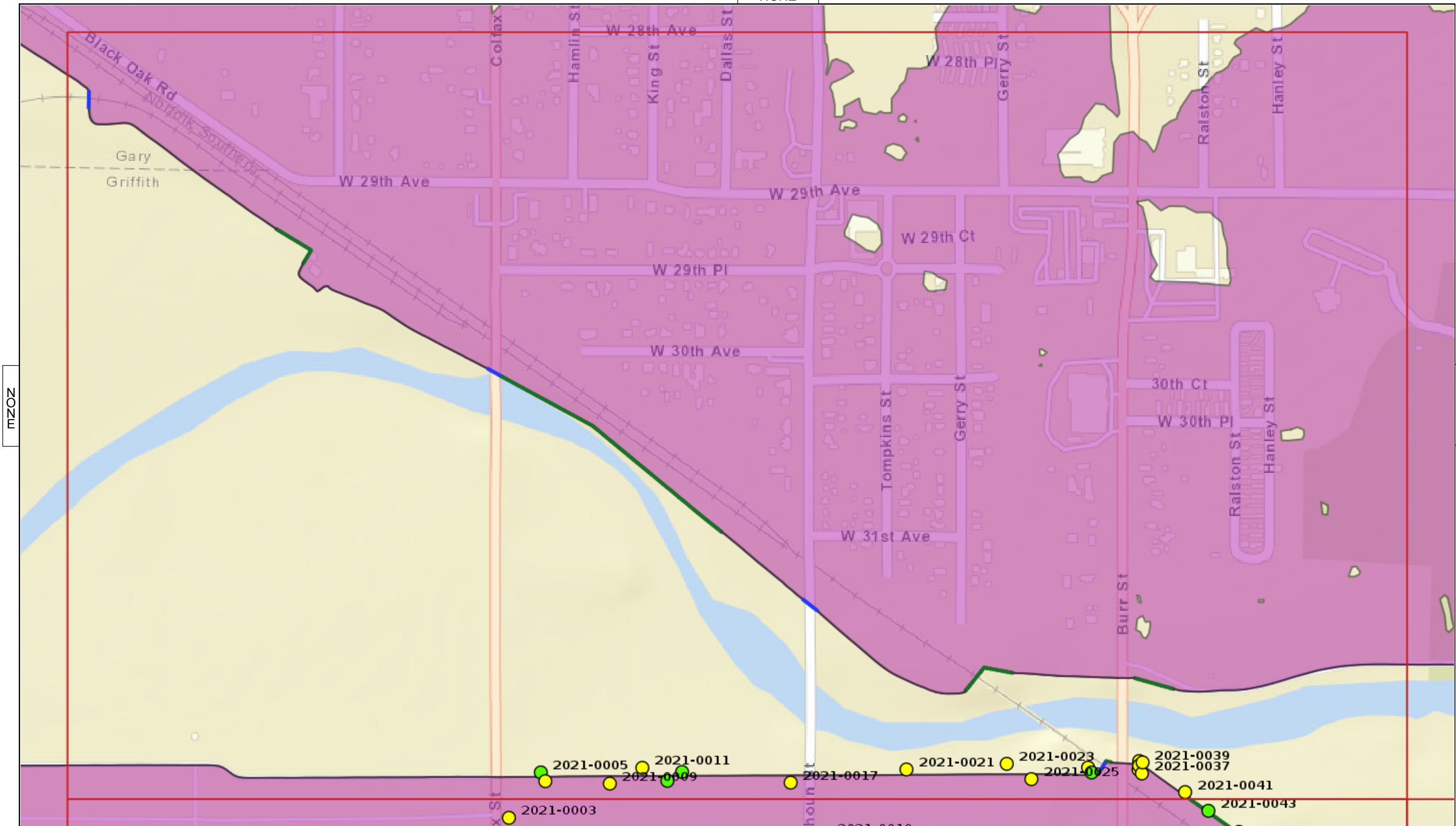


MAP ELEMENTS

3 Standard Sheets



NONE



NOZ

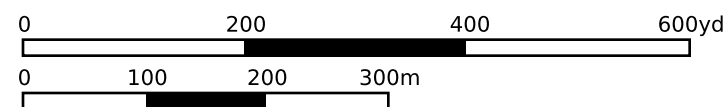
NOZ



OBSERVATIONS

-  Acceptable
-  Minimally Acceptable
-  Unacceptable
-  Not Applicable

Scale = 1:6000



NLD

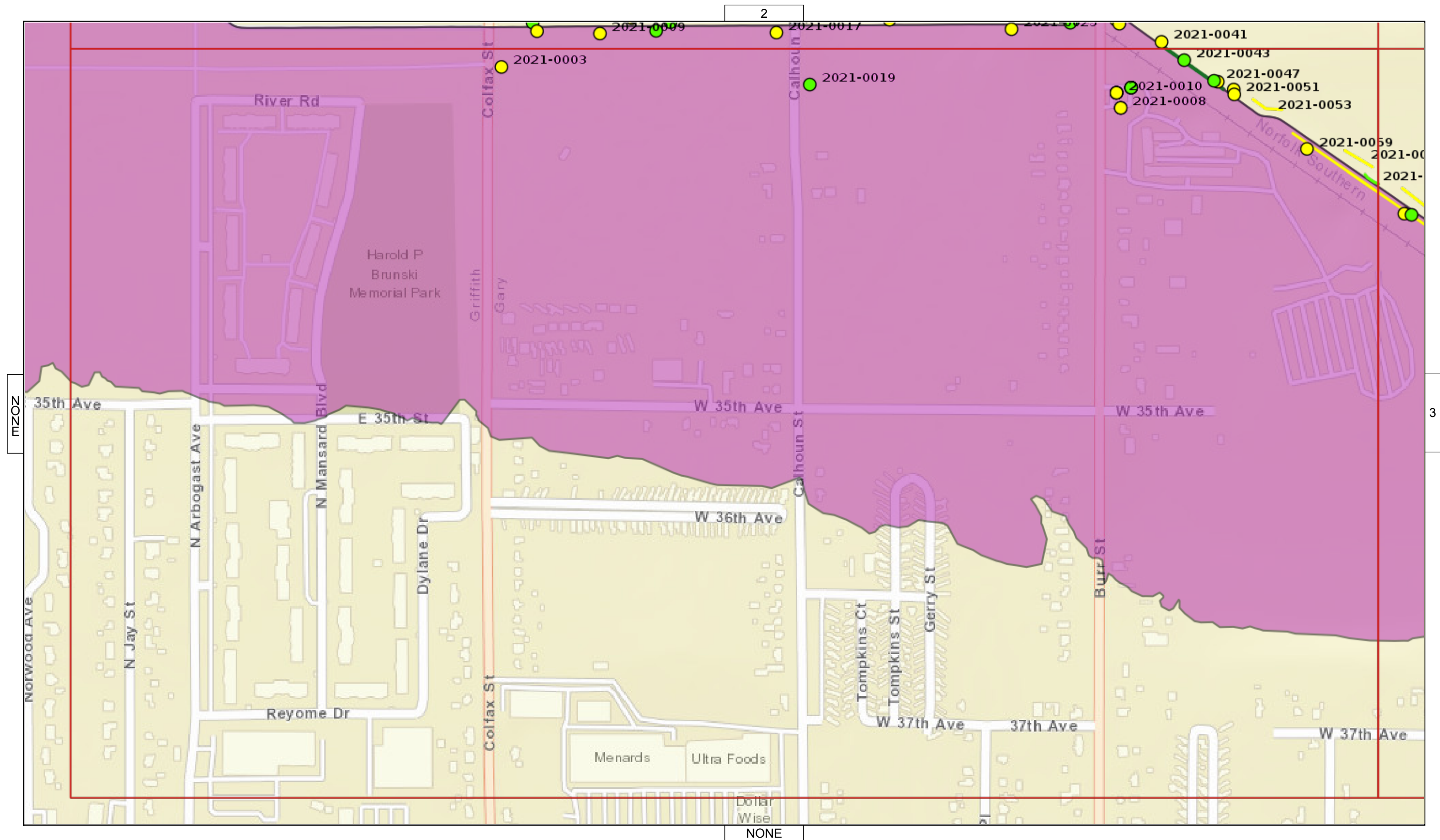
Sheet: 2

30-Apr-2021

Gary Burr St

Type: Periodic

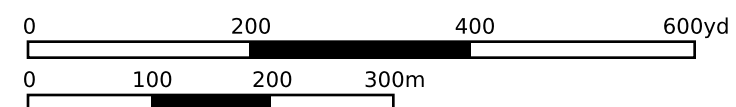
30-Apr-2021



OBSERVATIONS

-  Acceptable
-  Minimally Acceptable
-  Unacceptable
-  Not Applicable

Scale = 1:6000



Sheet: 1

30-Apr-2021

Gary Burr St

Type: Periodic

30-Apr-2021]

NONE



1

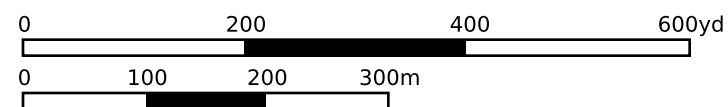
NOZ



OBSERVATIONS

-  Acceptable
-  Minimally Acceptable
-  Unacceptable
-  Not Applicable

Scale = 1:6000



NONE

NLD

Sheet: 3

30-Apr-2021

Gary Burr St

Type: Periodic

30-Apr-2021