

Little Calumet River Basin Development Commission

NAT MILLER, AUDUBON GREAT LAKES

**GARY SULLIVAN, THE WETLANDS
INITIATIVE**



Improved habitat across 300 acres

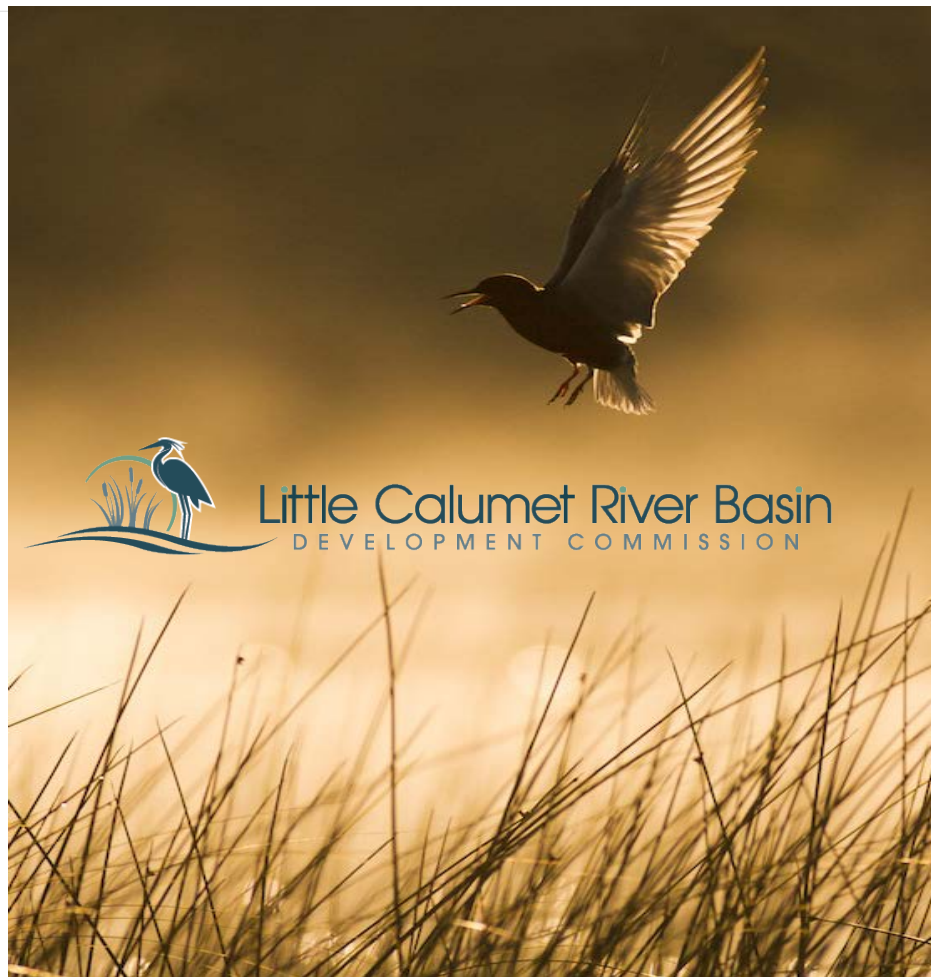
- *250 with two contractors*
- *50 with newly established crew*

Executed \$631,000

- *\$188,923 from Commission*
- *Second round of support from NFWF (\$300k) to start in July*

Engaged 14 organizations and 480 individuals

- *Conservation Action Plan guiding our work*
- *Completed plan from Army Corps to ensure optimal flood retention while we create conditions for wildlife*





2017



2021



2018



2019



2021



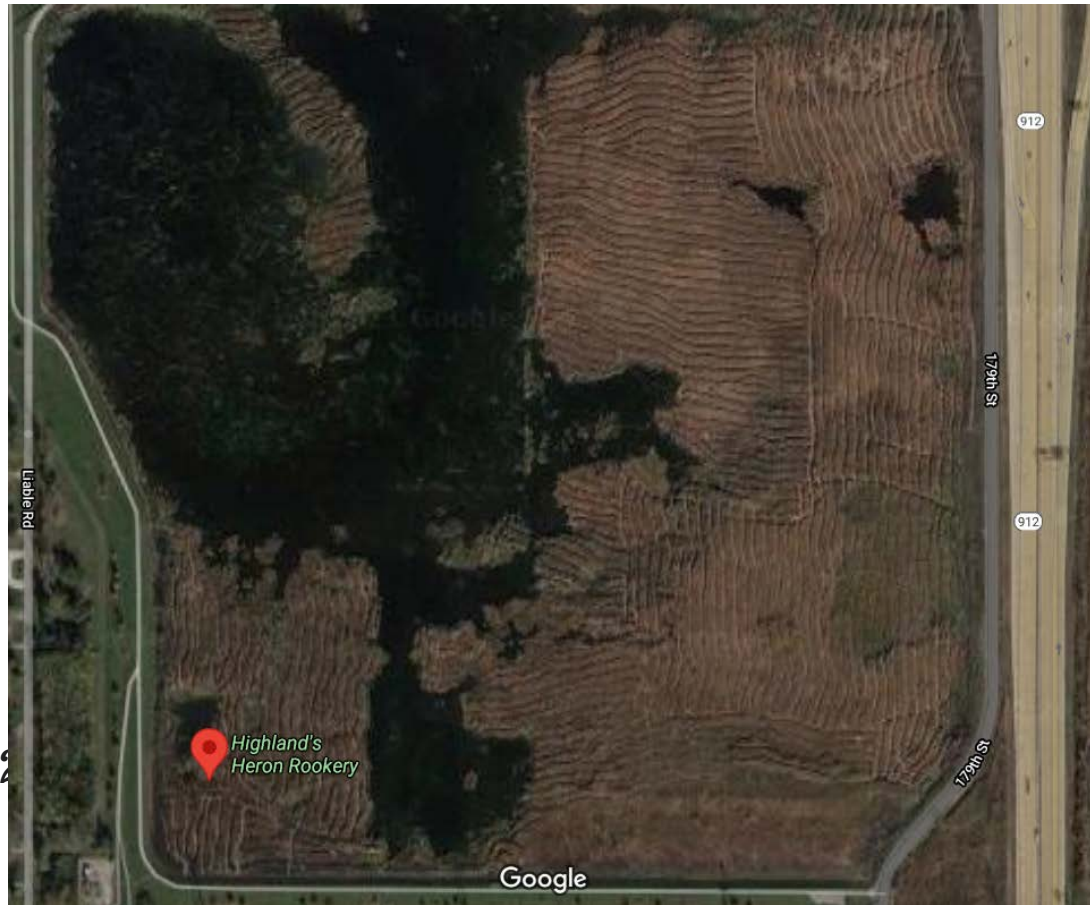
2019



2020



2021



Highland Heron Rookery

2021



Emily and Adriana – third crew member being hired now



The Commission's Impact on the Community

- Since the 1980s The Little Calumet River Basin Development Commission has worked to protect the people of Gary and surrounding communities from flooding events along the river.
- Now, in partnership with Audubon Great Lakes, Lake County Parks, The Wetlands Initiative, The Nature Conservancy and the City of Gary, the Commission is taking bold steps to restore and revitalize the river and its wetlands for the benefit of birds and to create new natural spaces for the people of Northwest Indiana.



DISCOVER THE BIRDS OF THE GRAND CALUMET
RIVER AND LITTLE CALUMET RIVER

WILD INDIGO NATURE EXPLORATIONS

GREEN GARY WEEK BIRD WALKS

TUESDAY, APRIL 20, 2021

NEW LOCATION! BRUNSWICK PARK
700 CLARK RD, GARY, IN 46406
10:00 AM-11:30 AM & 2:00 PM-3:30 PM

FRIDAY, APRIL 23, 2021

HATCHER PARK PAVILION
2025 E 21ST AVE, GARY, IN 46407
10:00 AM-11:30 AM & 2:00 PM-3:30 PM

BRING YOUR OWN BINOCULARS OR BORROW
A PAIR WHILE SUPPLIES

REGISTER AT
[HTTPS://TINYURL.COM/GARYBIRDWALK](https://tinyurl.com/garybirdwalk)

EMAIL [JENNIFER.JOHNSON@AUDUBON.ORG](mailto:jennifer.johnson@audubon.org) FOR MORE INFO



Upcoming Events

- April 20 – Two Bird Walks at the Gary Green Link Trail
- April 21 – Pollinators and Urban Farming Zoom
- April 23 – Two Bird Walks at Hatcher Park
- April 24 – Brown Faces Green Spaces Walks
- May 29 – Transit to Trail Hike at Miller Woods
- June 26 – Transit to Trail Hike Brunswick Park
- Spring (TBD) Plant Giveaway with Dunes Calumet Audubon Society
- June 5 or 12 – Levee Walk
- July 10 – Levee Walk

CONTACT: Jennifer Johnson, Wild Indigo Coordinator (Gary)

Cell: 872-201-0647; Email: jennifer.johnson@audubon.org



Little Calumet River Basin
DEVELOPMENT COMMISSION



WILD INDIGO NATURE EXPLORATIONS

URBAN FARMS, POLLINATORS, AND YOU



WEBINAR, WEDNESDAY, APRIL 21, 2021
AT 1PM-2PM

LEARN HOW TO ATTRACT BIRDS AND BENEFICIAL INSECTS FOR YOUR GROWING SPACES!

REGISTER FOR ZOOM AT [HTTPS://TINYURL.COM/WILDINDIGOWEBINAR](https://tinyurl.com/wildindigowebinar)

WATCH ON FACEBOOK

EMAIL [JENNIFER.JOHNSON@AUDUBON.ORG](mailto:jennifer.johnson@audubon.org) FOR MORE INFO



Audubon
GREAT LAKES



Upcoming Events

 Audubon

- April 20 – Two Bird Walks at the Gary Green Link Trail
- April 21 – Pollinators and Urban Farming Zoom
- April 23 – Two Bird Walks at Hatcher Park
- April 24 – Brown Faces Green Spaces Walks
- May 29 – Transit to Trail Hike at Miller Woods
- June 26 – Transit to Trail Hike Brunswick Park
- Spring (TBD) Plant Giveaway with Dunes Calumet Audubon Society
- June 5 or 12 – Levee Walk
- July 10 – Levee Walk

CONTACT: Jennifer Johnson, Wild Indigo Coordinator (Gary)

Cell: 872-201-0647; Email: jennifer.johnson@audubon.org



Marsh bird breeding trends



Marsh Bird Occupancy Esti...

Region Little Calumet

Site All Sites

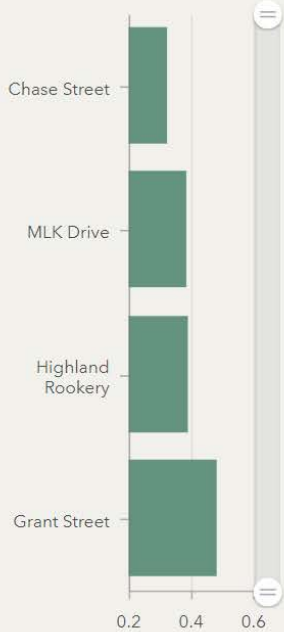
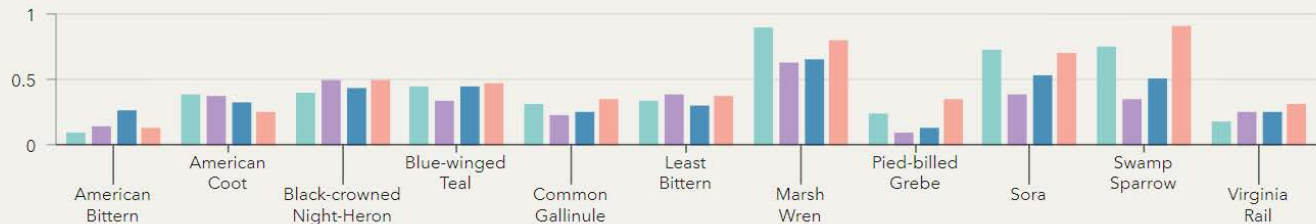
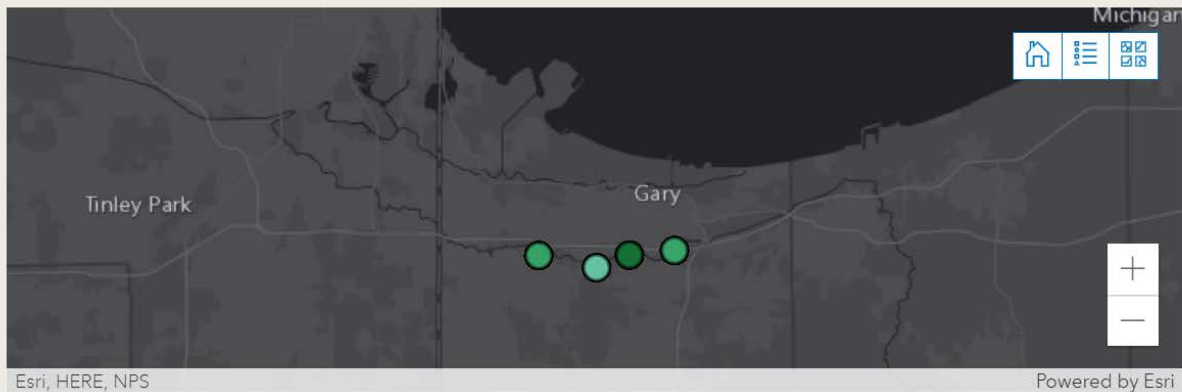
Year All Years

Species All Species

This dashboard displays the likelihood of a site being used (occupancy) by our focal marsh bird species at each site. The estimates were

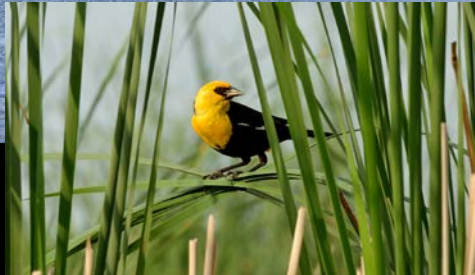


Species occupancy across selections. If all regions, sites,



West Branch of the Little Calumet River Restoration Strategy and Implementation:

- Hemimarsh development for wildlife habitat
- Water level management to control hydrology
- Net zero impacts on flood control
- Development of a natural resource for both the public and wildlife



Phase 1 Strategic Planning for Ecological Restoration and Initial stages of implementation

Heron Rookery, Grant Street Wetlands, Martin Luther King South, Martin Luther King North, and the Marshalltown Marshlands

- Regional hydrology and site water level assessment
- Site topography and bathymetry assessment
- Vegetation surveys and invasive species assessment
- Crew training and Invasive species management
- Water control structure planning for HR and MLKS

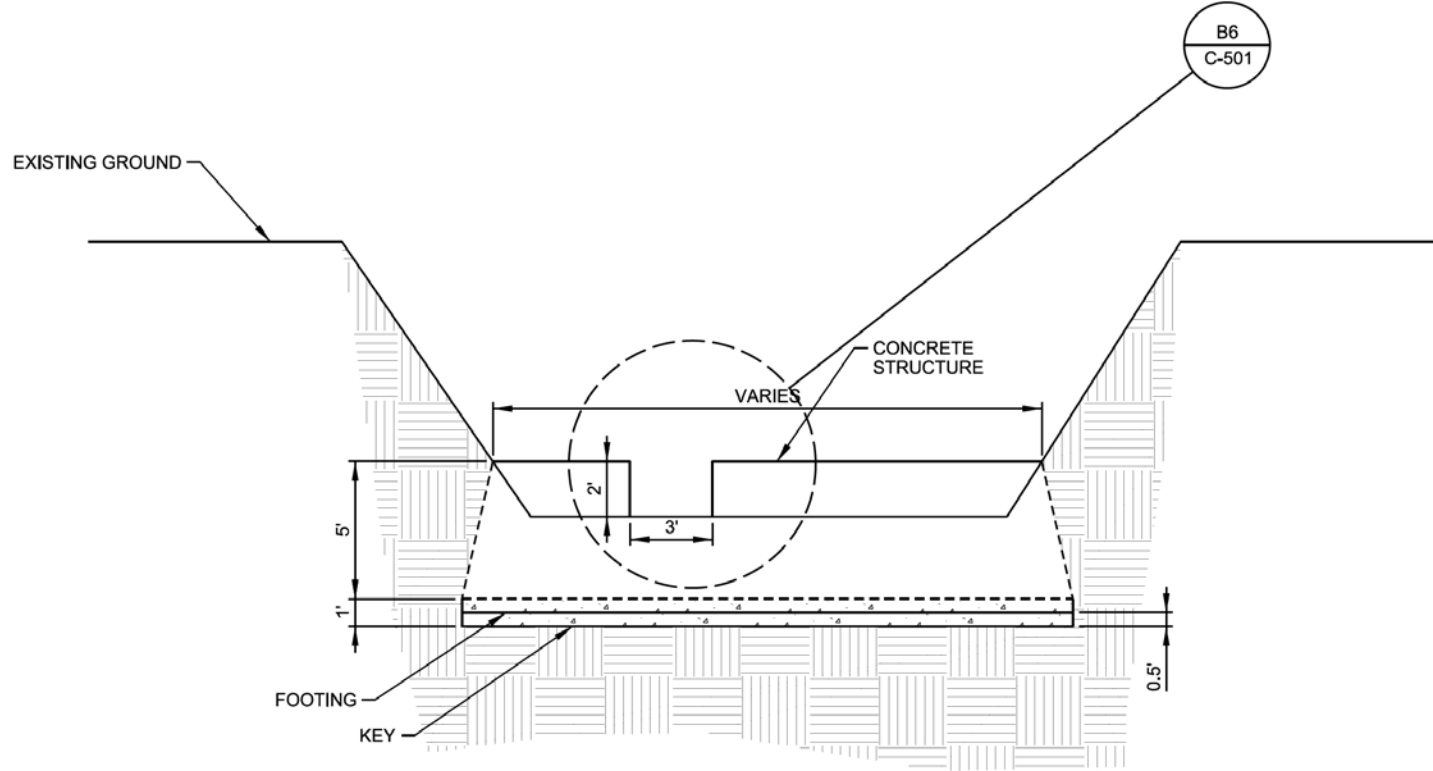
Phase 2 Implementing restoration through hydrologic manipulation and plant community development

- Stop log water level control structure installation
- Integrated Phragmites management / elimination
 - chemical application
 - prescribed burning
 - flooding
- Wetland plant community development
- Phase 3 strategic planning (MLKN and MM)

Stop Log Water Control Structure Designs and Functional Goals

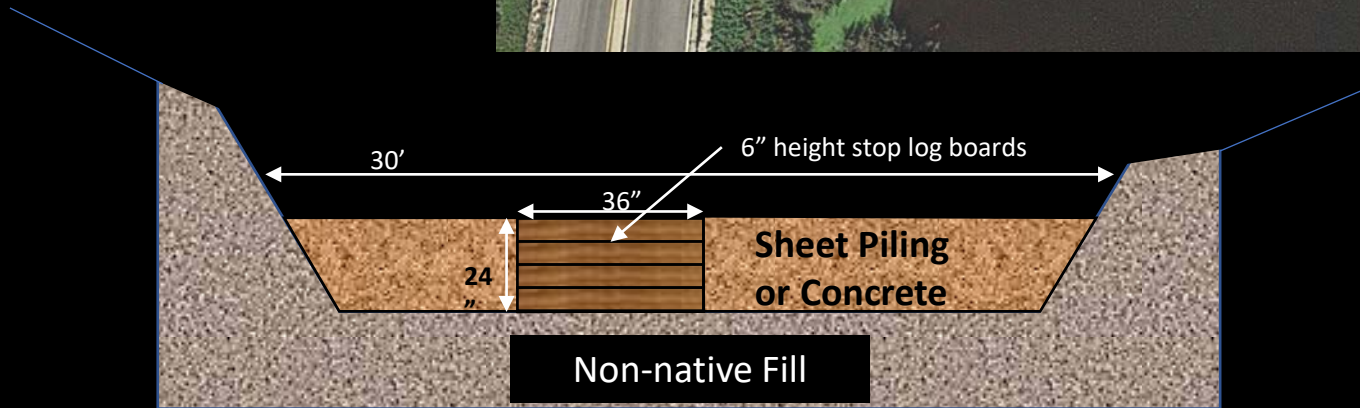
- ability to manipulate internal water levels
- strategic water levels to achieve desired inundation area, depth profiles, and ecological restoration goals
- minimum maintenance required to maintain ecological function
- implementation to result in no impacts to flood control function
- maintenance not required to maintain flood control function



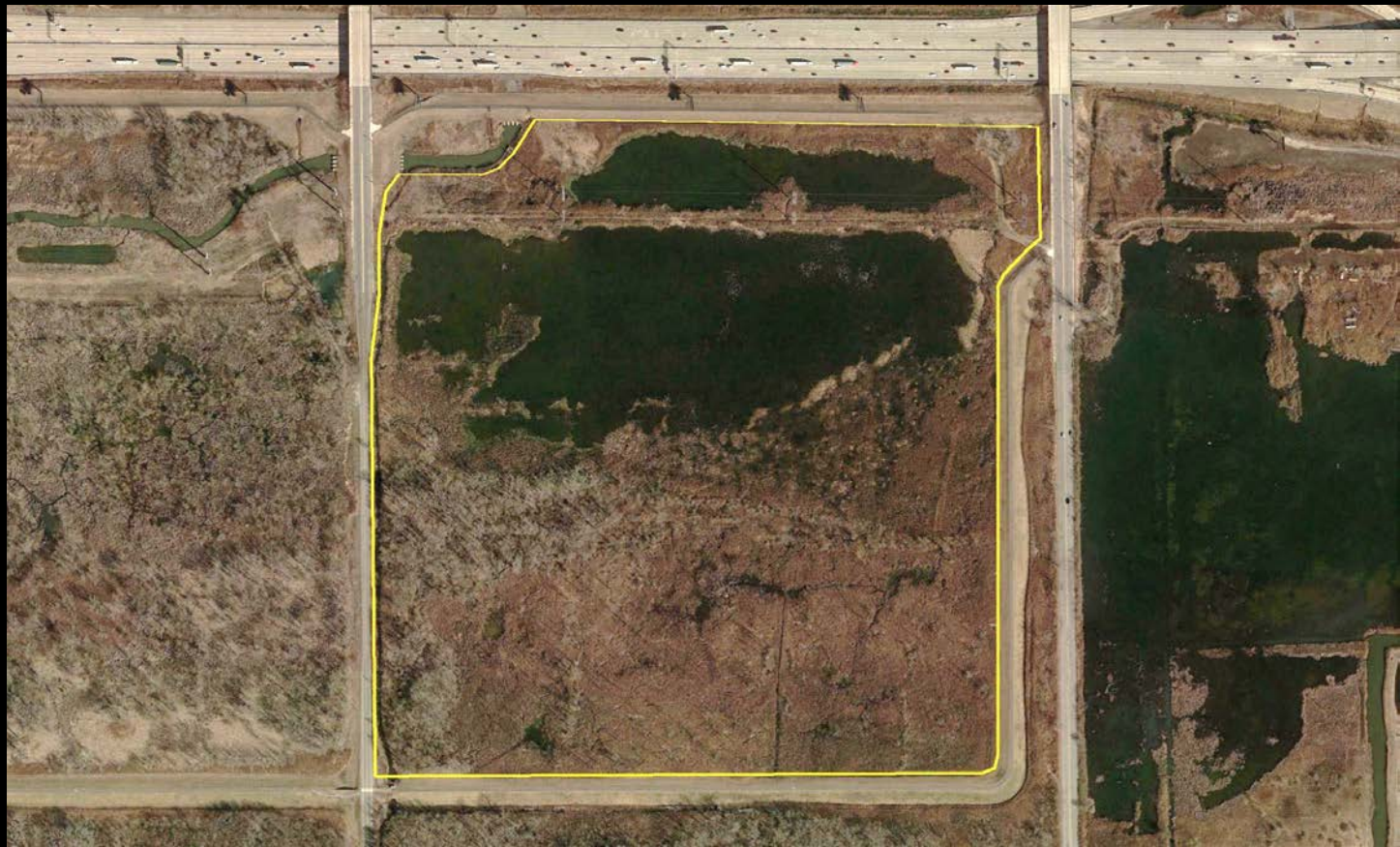


MLK South

Stop Log Water Control Structure
Cross-section Concept



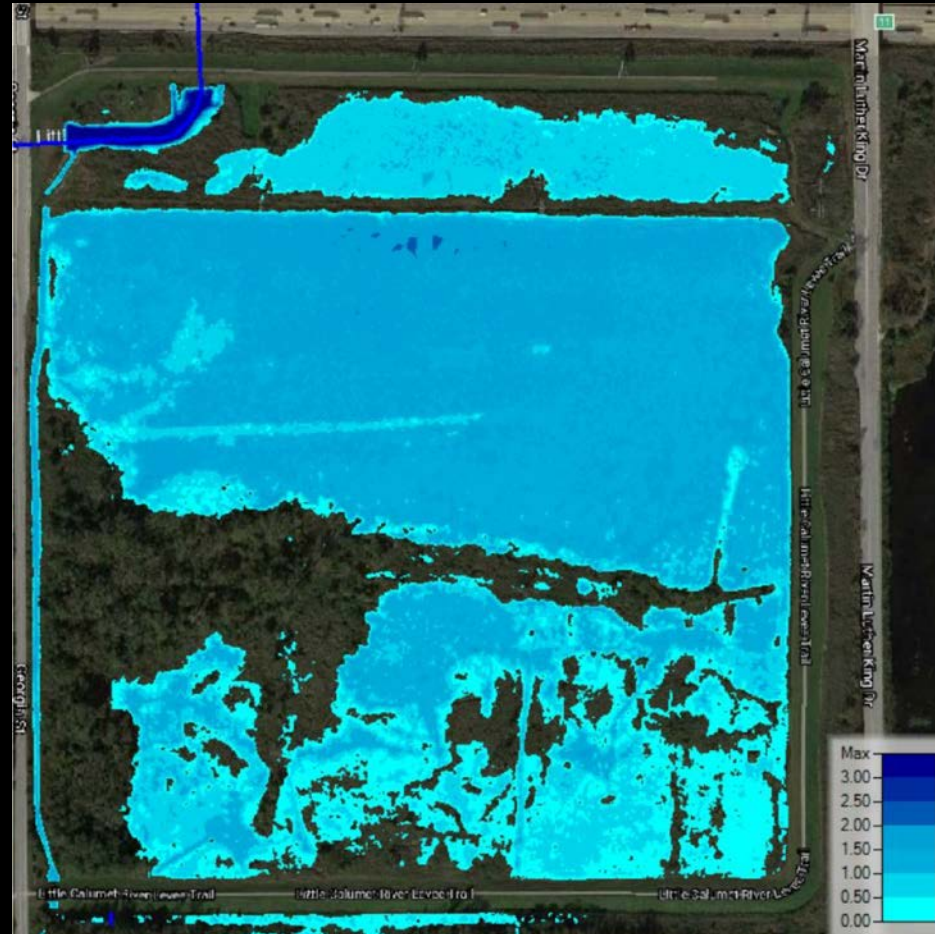
MLKS 2018: basin full (beaver dam at outlet)



MLKS 2020: basin dry (beaver dam removed)

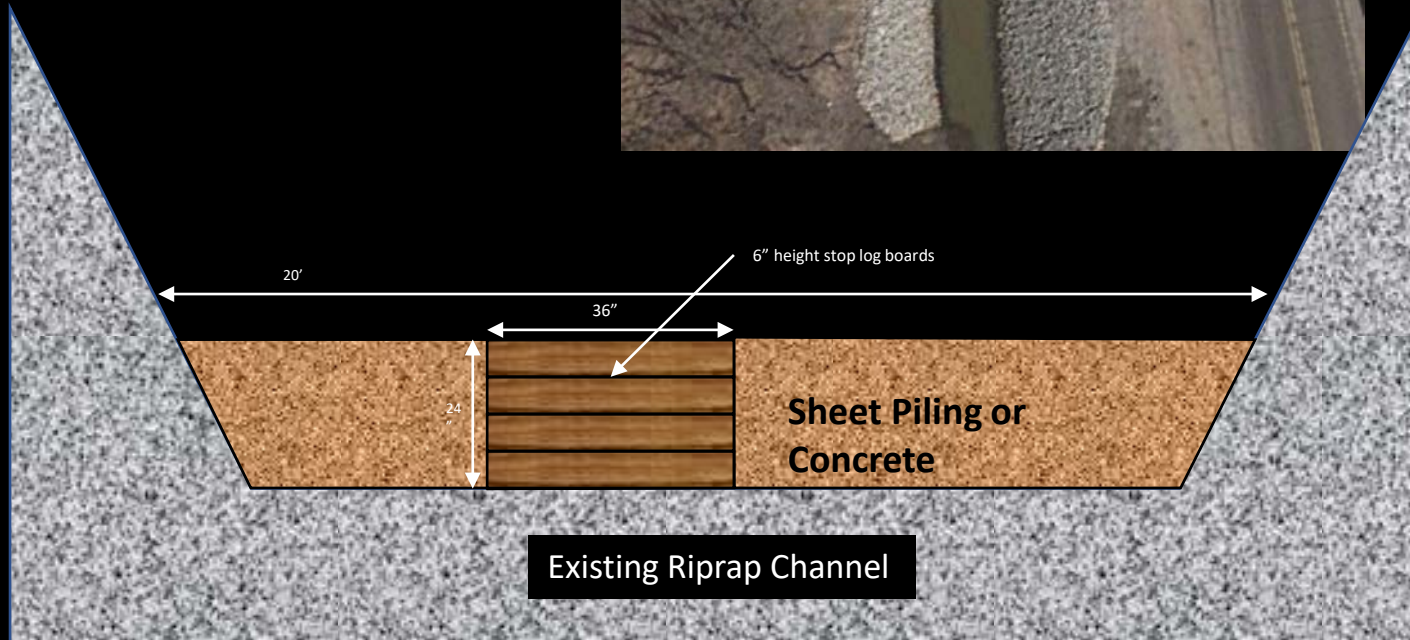


Martin Luther King South fully inundated / stop logs in



Heron Rookery

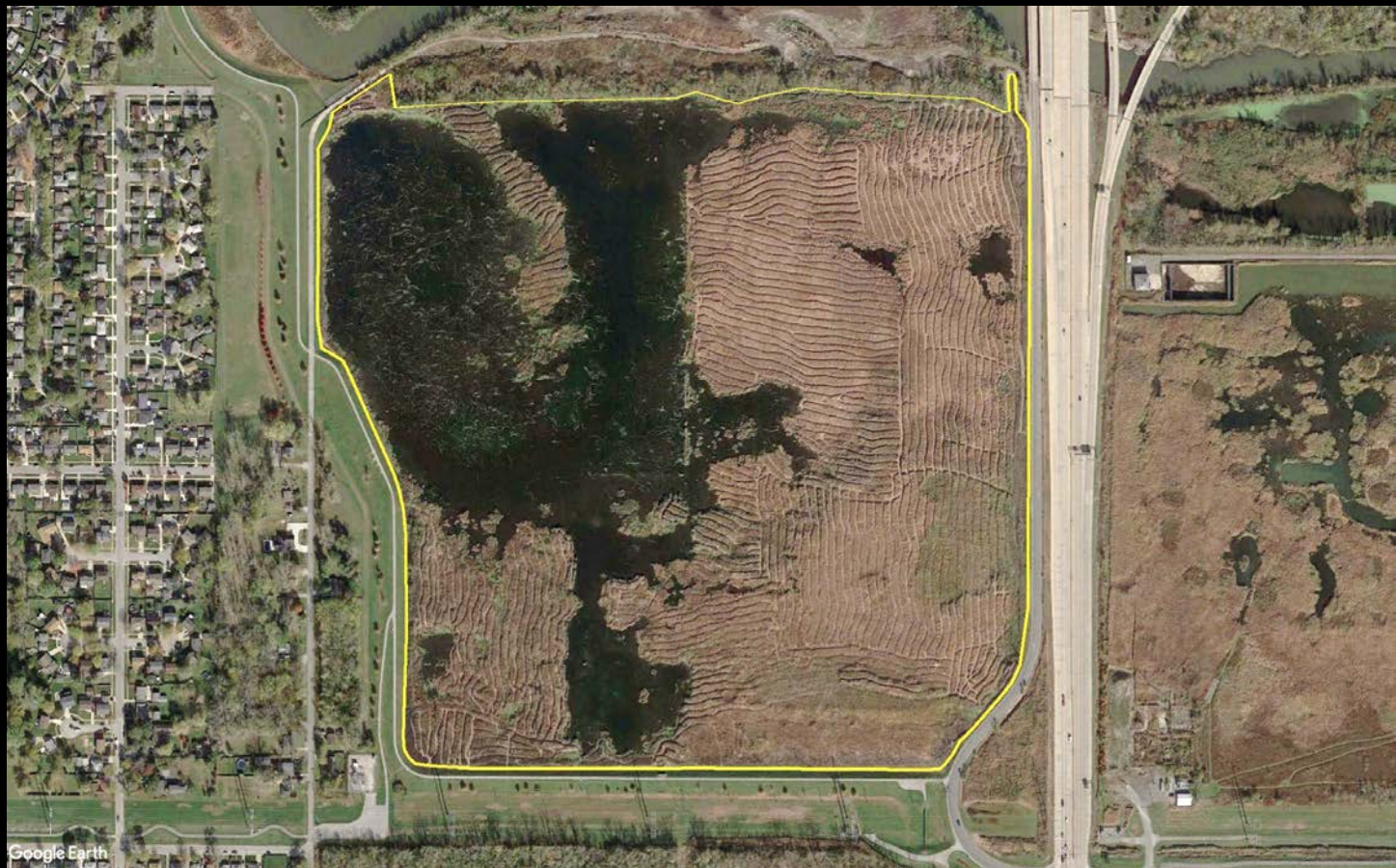
Stop Log Water Control Structure
Cross-section Concept



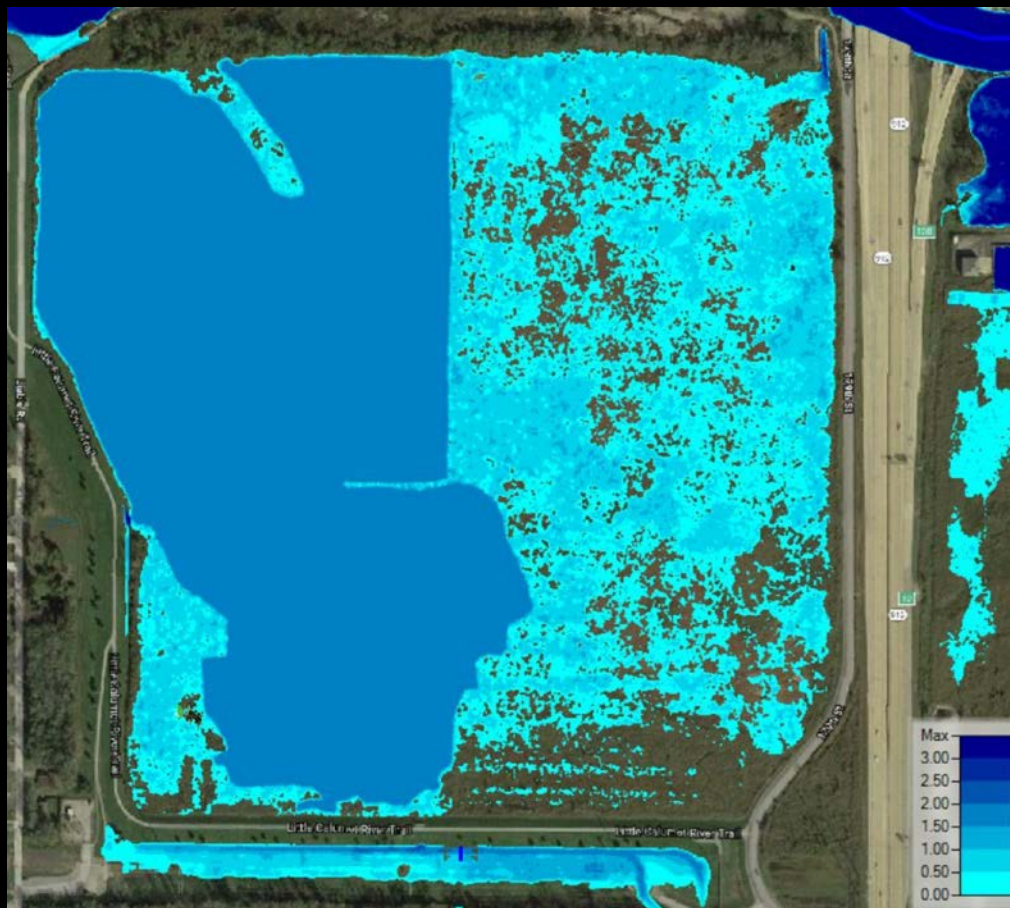
Heron Rookery 2008: basin full (major flood event)



Heron Rookery 2020: basin levels low (dry year)



Heron Rookery fully inundated / stop logs in





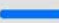
MLK North 2020

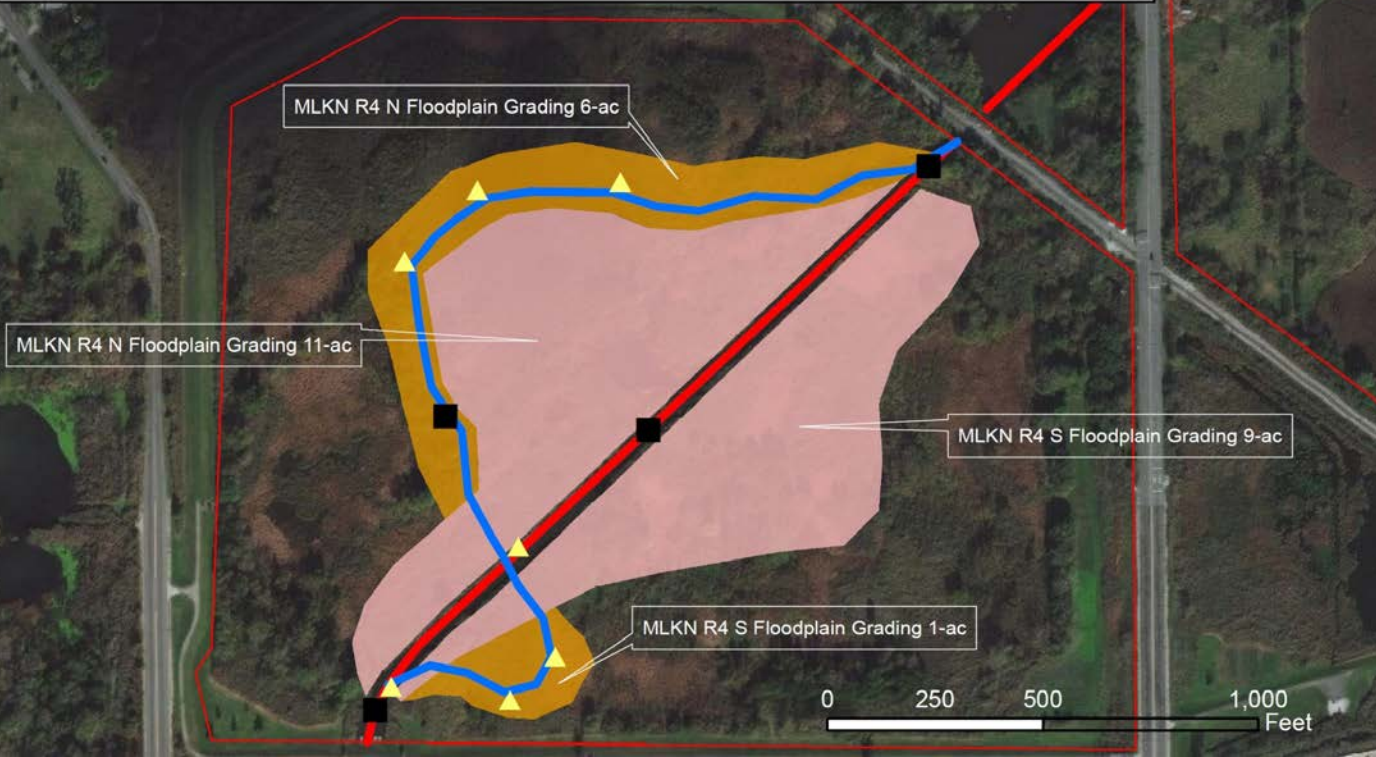


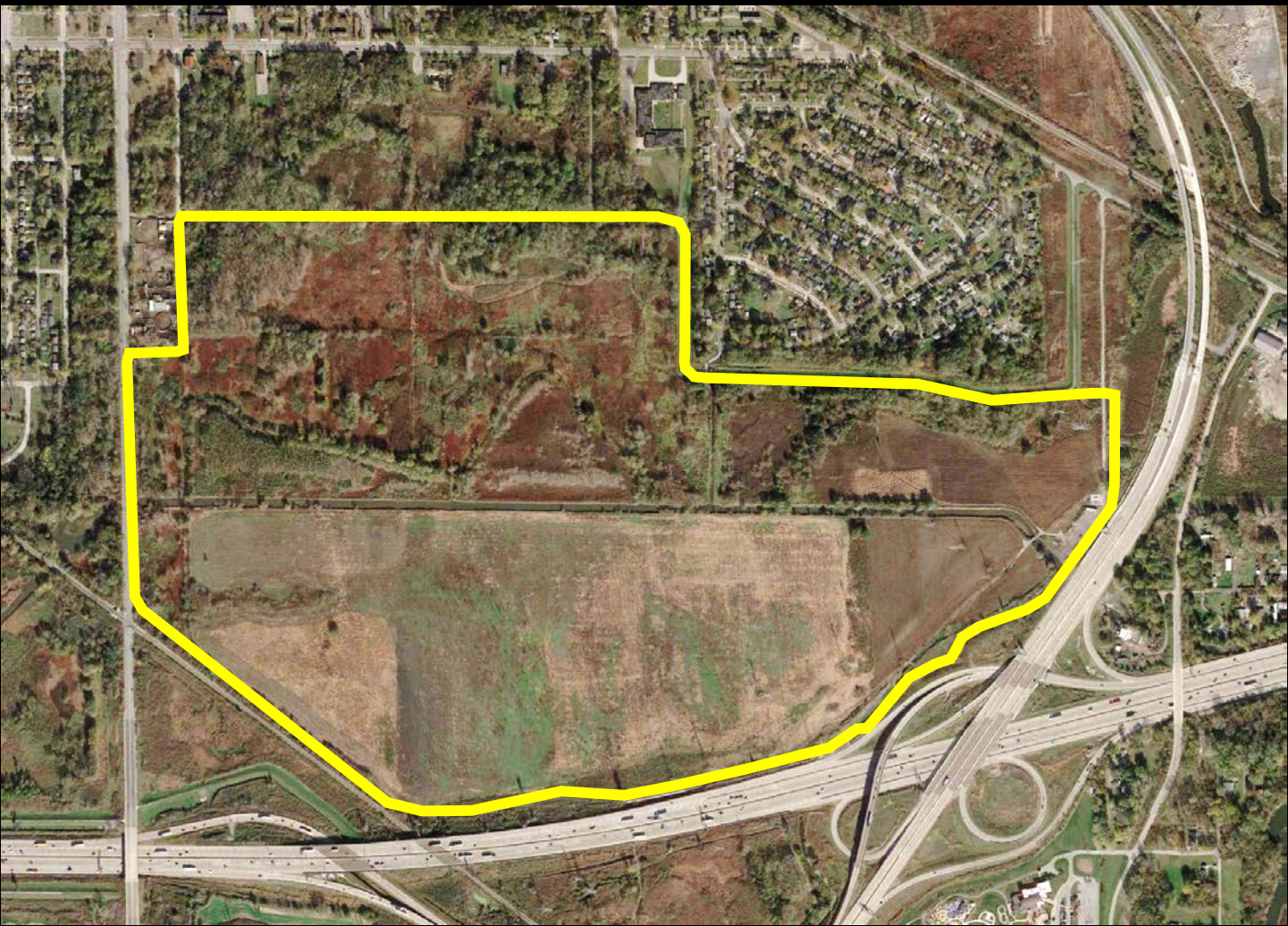
MLKN Alternative

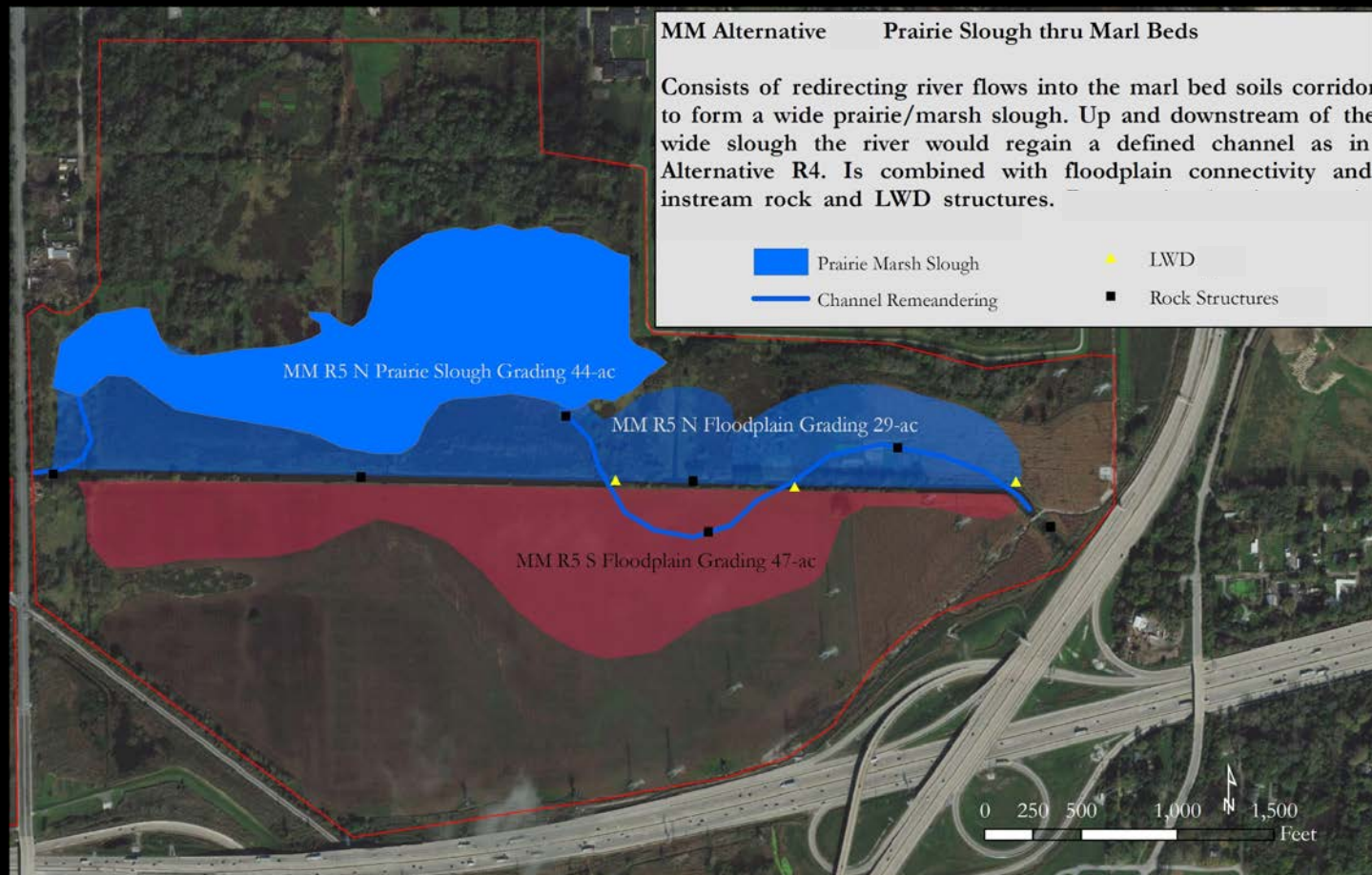
Sculpted Riverine Establishment

Consists of excavating and sculpting a new river channel and associated habitat features. Is combined with floodplain connectivity and instream rock and LWD structures.

-  LWD
-  Rock Structures
-  Channel Remeandering









Funders

