

Little Calumet River Basin Commission



**EXECUTIVE DIRECTOR
DAN REPAY**

History



- Designated by the Indiana General Assembly in 1981 under Governor Otis Bowen
- Established under IC 14-13-2
 - Initially as a 11 member board and changed to a 5 member board in 2009
- 22 miles of levee
- Congress Approved Little Calumet River project in 1986
- First Little Calumet River project started in 1990

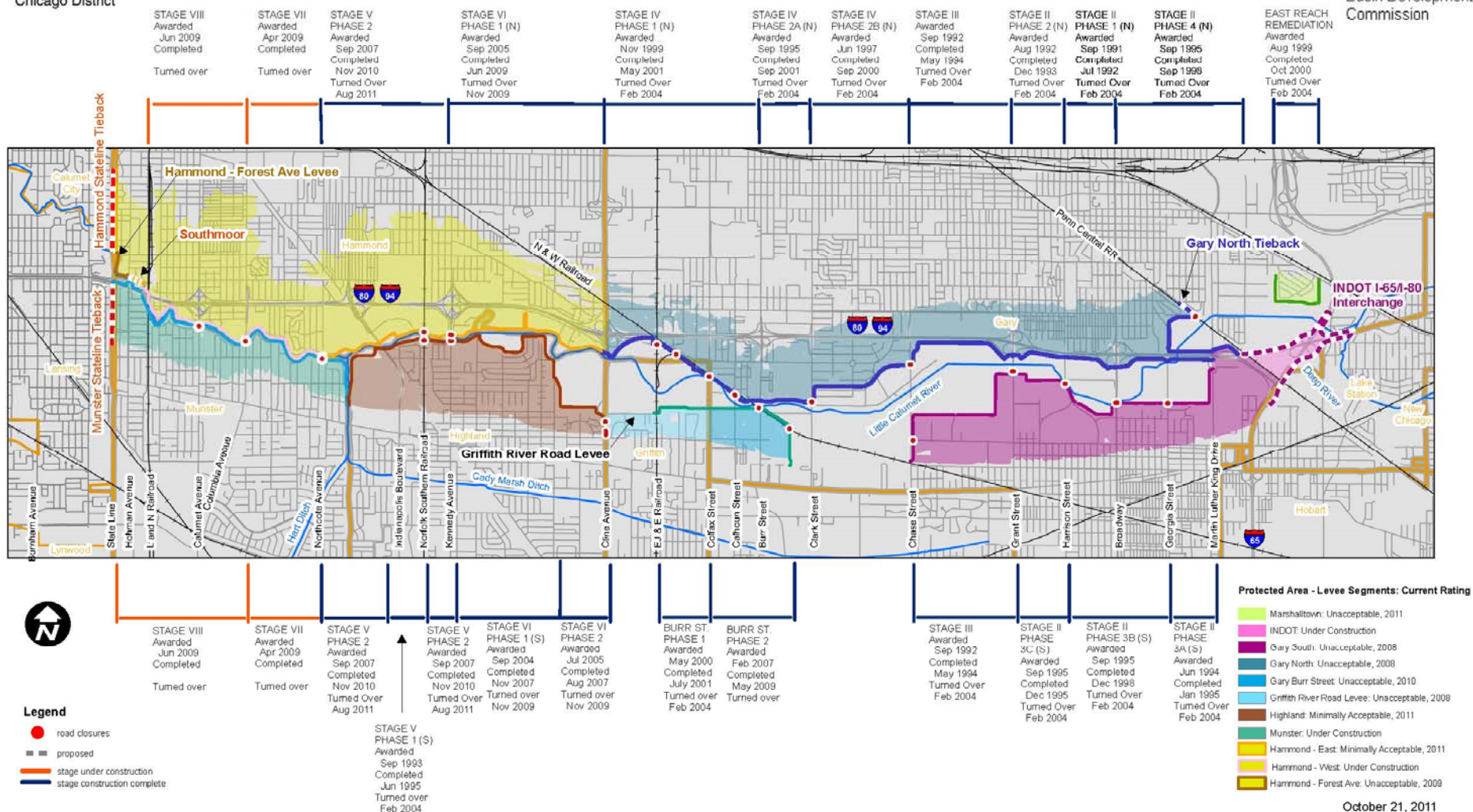
New Legislation



- **As of August 1, 2012**
 - 9 members appointed by Governor
 - 1 member nominated by Mayor of Gary
 - 1 member nominated by Mayor of Hammond
 - 2 members nominated by County Commissioners
 - Fees placed on Property Owners in the Watershed
 - Formation of Advisory Board

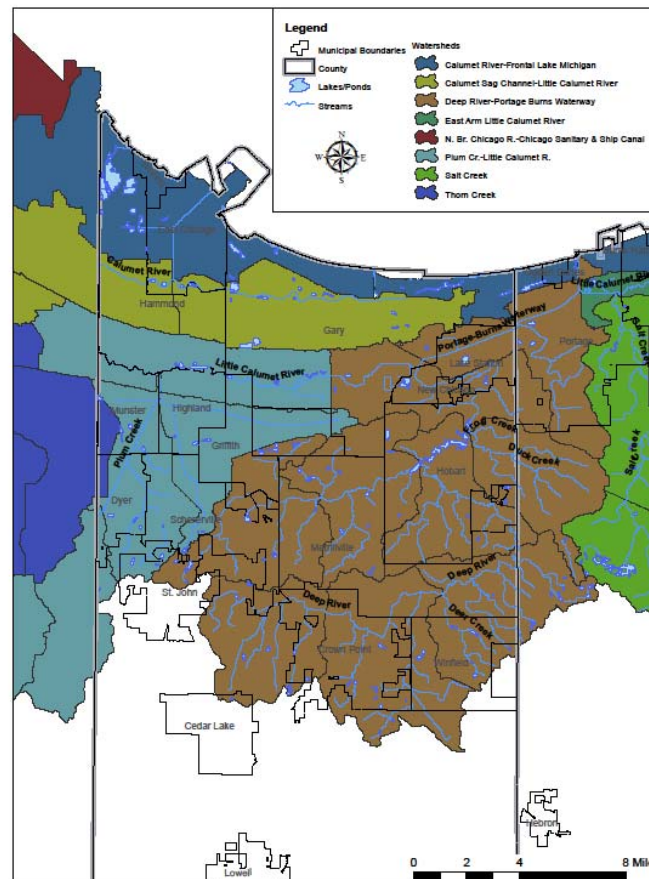


Little Calumet River
Basin Development
Commission



October 21, 2011

Little Calumet Watershed



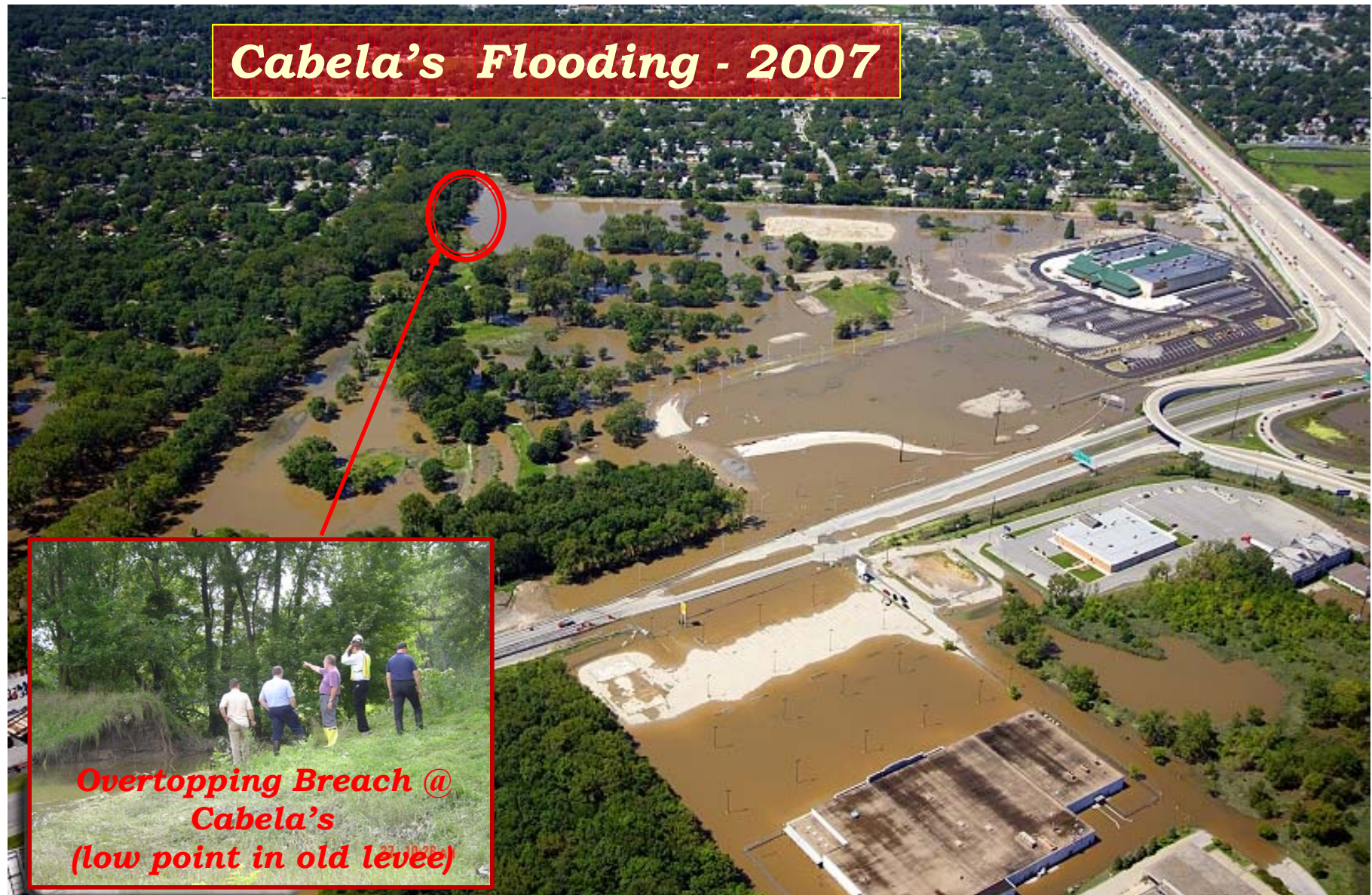
Little Calumet River Flood Reduction Project



- October 1954 – Flood of Record; estimated damages \$217M
- April 1981 – Stateline Flood; estimated damages \$89M
- May 1989 – Highland, Gary, Deep River; estimated damages \$172M
- November 1990 – New Flood of Record; I-80/94, Highland (Wicker Park), Gary; estimated damages \$288M
- September 2006 – Highland and Griffith (primarily interior flooding); estimated damages \$131M
- September 2007 – I-80/94 Expressway, Hammond, Cabala's; estimated damages \$217M
- September 2008 – New Flood of Record; I-80/94 Expressway, Munster, and Gary; estimated damages \$881M

¹ Estimate damages based on depth-damage curves, including uncertainty; damages reported in 2011 dollars.

Little Calumet River Flood Reduction Project



Little Calumet River Flood Reduction Project

Kennedy Ave Flooding - 2007

***Open
Flapgate &
Sluice Gate***

Aerial Images Photography
www.aerialimages-photo.com
(847)985-7685
Copyright 2007

Little Calumet River Flood Reduction Project

Borman Expressway at Kennedy Ave



Little Calumet River Flood Reduction Project

Columbia Avenue - 2008



Little Calumet River Flood Reduction Project

2008 Flood



Chase St.

Northcote Ave.



- Construction complete from Kennedy Ave to east
- Stages 5-2 under construction
- Flooding in Gary due to road closures not being installed at Chase Street, 35th Street, Grant Street, Harrison Street, and through Sewers connected to river
- Borman Expressway flooded in numerous locations in Gary and Hammond due to incomplete construction of Stage 5-2 near Kennedy and failure to install road closures
- Severe Flooding in Munster from breach of old levee near Columbia Ave and at Calumet Ave.



Borman Expressway







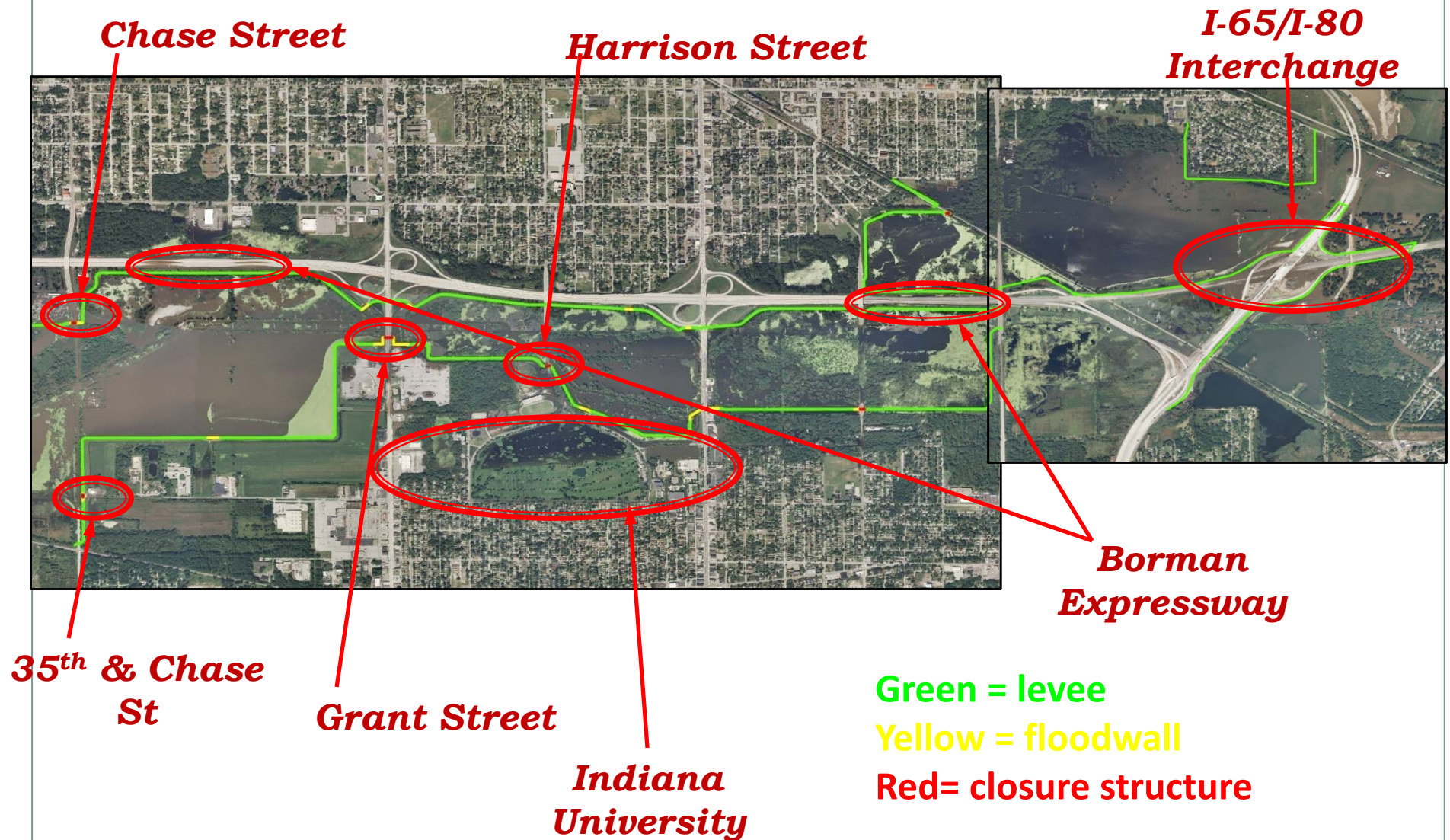






Little Calumet River Flood Reduction Project

Flooding in Gary - 2008



Chase Street Closure



Grant Street



After



Manholes



Manhole Extensions



Chase Street 60" Sewer



Four Culverts Under Railroad



After



Chase Street



Before



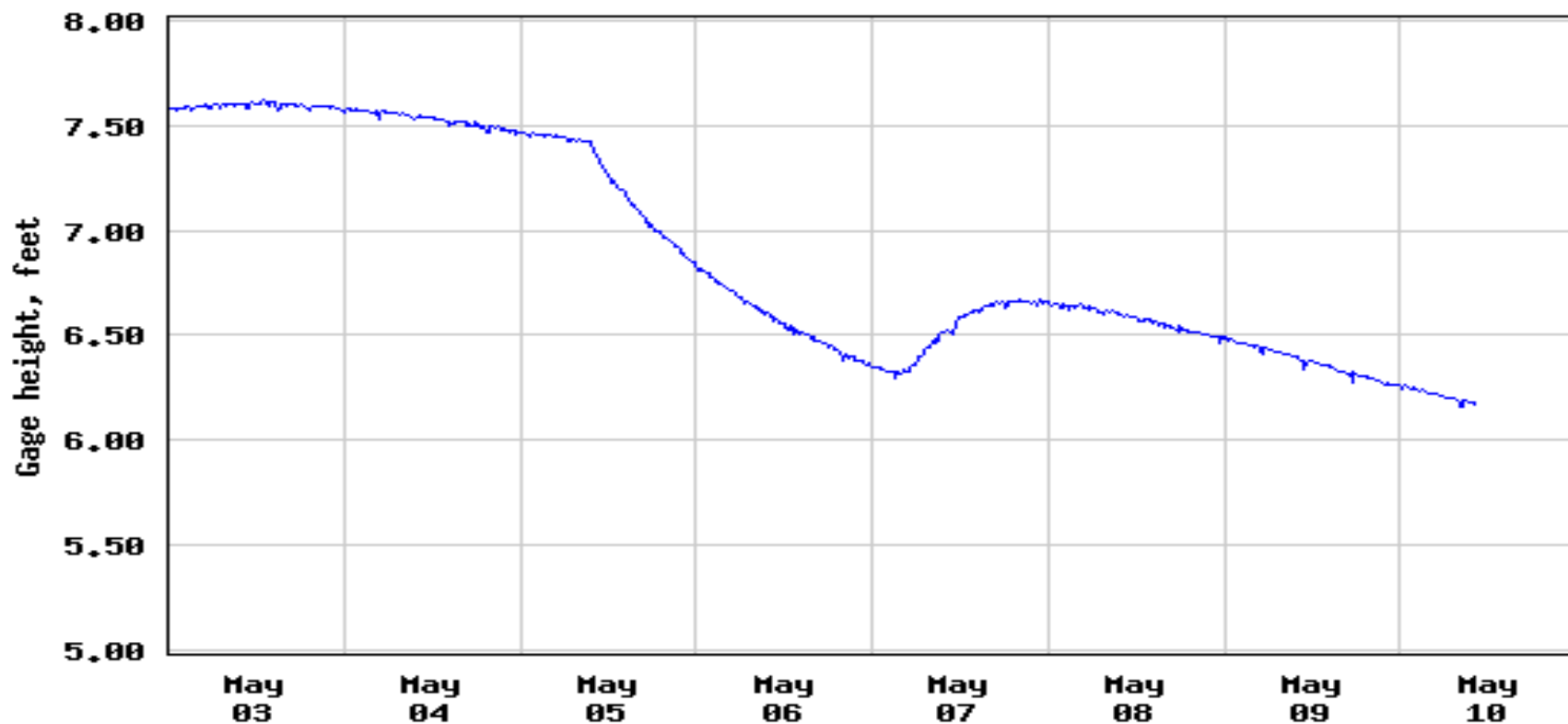
After



Chase Street



USGS 413339087223001 LITTLE CALUMET RIVER AT BURR STREET AT GARY, IN



----- Provisional Data Subject to Revision -----

Project

Current Ratings



LEVEE SEGMENT	SEGMENT RATING	SYSTEM RATING	STATUS
Marshalltown	Unacceptable	Unacceptable	INACTIVE
Gary – South	Unacceptable	Unacceptable	INACTIVE
Gary – North	Unacceptable	Unacceptable	INACTIVE
Gary – Burr Street	Unacceptable	Unacceptable	INACTIVE
Griffith	Unacceptable	Unacceptable	INACTIVE
Highland	Minimally Acceptable	Minimally Acceptable	ACTIVE
Hammond – East (Northcote to Cline)	Minimally Acceptable	Minimally Acceptable	ACTIVE
Hammond – West (Hohman to Northcote)			In Construction
Hammond – Forest Ave	Unacceptable	Unacceptable	INACTIVE
Munster			In Construction

Operation and Maintenance



- **Hammond**
- **Highland**
- **Gary**
- **Griffith**
- **Munster**
- **State of Indiana Department of Transportation**
- **NIPSCO**
- **Purdue Calumet Students**
- **Friends of the Little Calumet River**

River Storage in Gary

Before



After



Challenges



Clark Street Culverts in Gary



Before



After



Recurring Blockages





There are no access
points into the river for
O&M

Most work must be done
by hand



Broadway Avenue Dam

Animal Damage



Missing Parts



Pipes Breaking



Crack in Discharge Pump Station Discharge Pipe



Erosion





10 Inch Ruts on Levee

















New Bike Trails



Little Calumet River Fest





Contact Info:

Little Calumet River Basin
Commission

900 Ridge Road

Munster, IN 46321

219-595-0599

E-mail

[drepay@littlecalumetriver
basin.org](mailto:drepay@littlecalumetriverbasin.org)



Questions?