

# Little Calumet River Basin Development Commission

Lake County Highway Department  
Request for Funding  
Lake County Bridge 260 – Main Street over Hart Ditch  
and  
Lake County Bridge 264 – Hart Street over Hart Ditch





# Lake County Bridge 260

- Benefits to the Little Calumet River Basin
  - Removes existing piles from the channel
  - Eliminates flooding risks due to potential blockages
  - Eliminates continual maintenance to remove blockages
  - Reduces flow velocities through structure; thus, reducing scour /erosion and sediment transport downstream
  - Removes Electrical Relay Station out of potential flood risk area
  - Removes 9 property owners along Shannon Bridge Road out of the potential flood risk area.

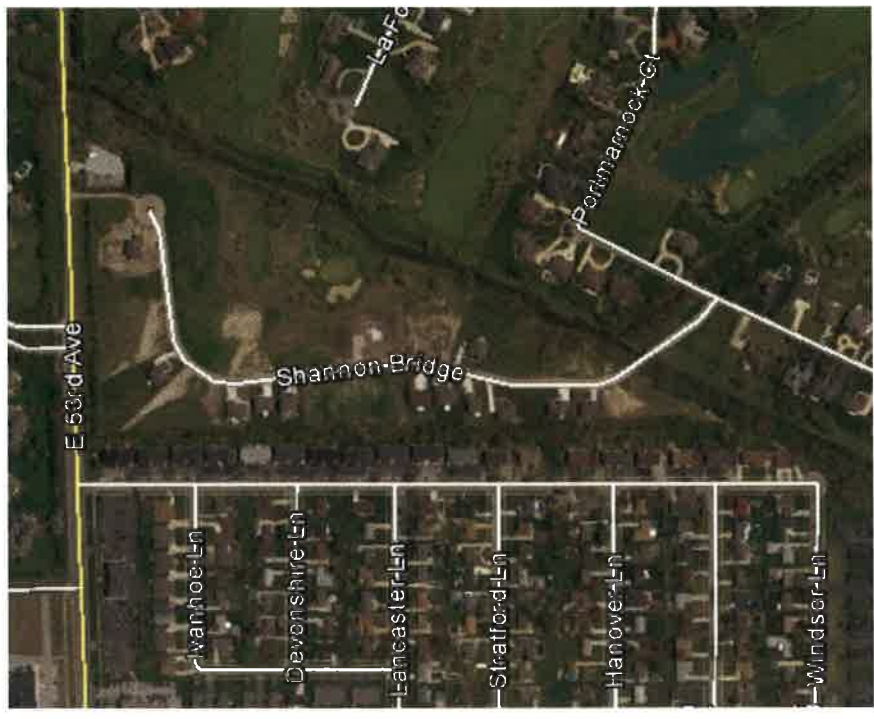




# Lake County Bridge 260



Potential flooding area due to blockage



Current property development as of 4-30-2015

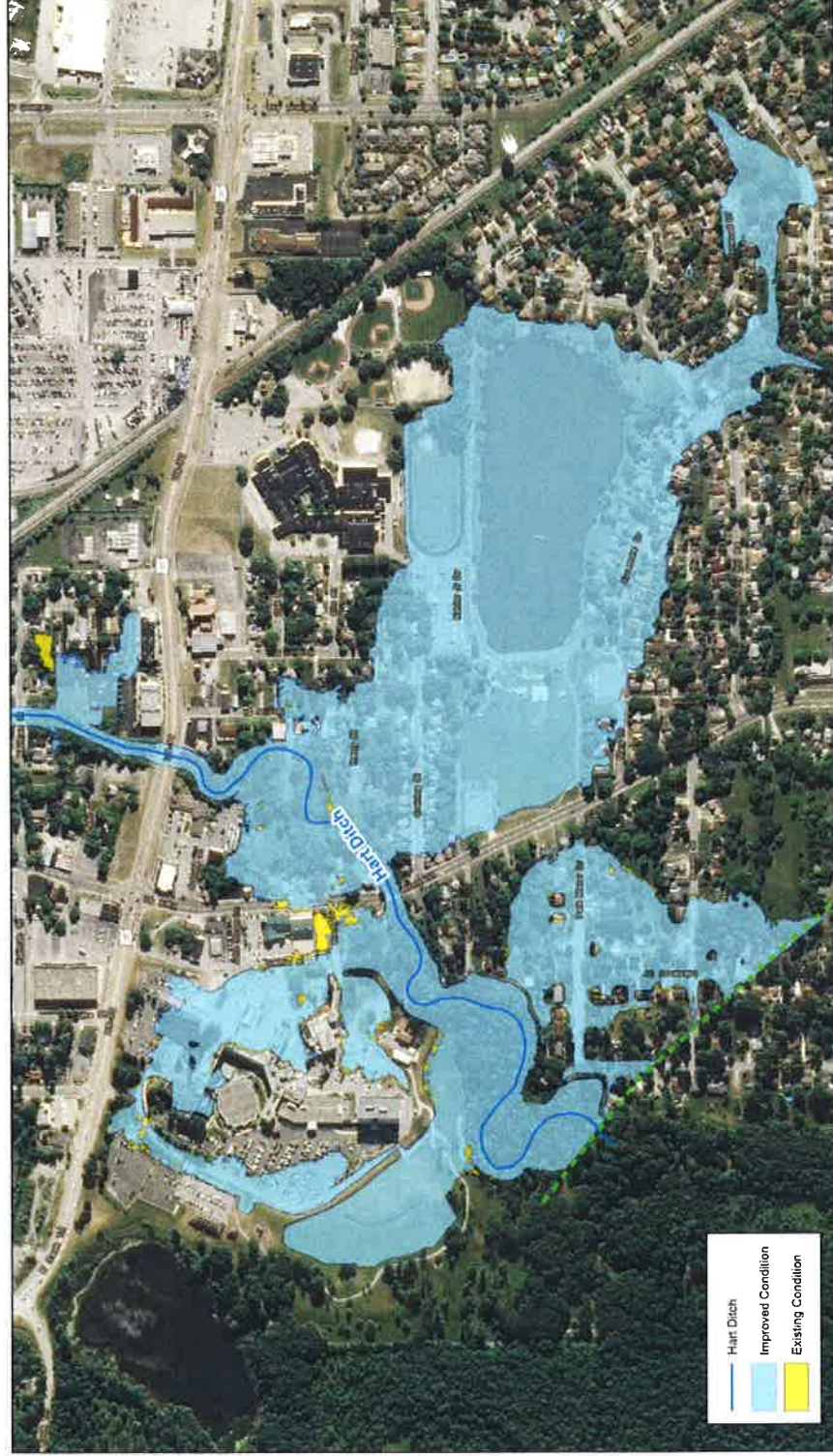


# Lake County Bridge 264

- Benefits to the Little Calumet River Basin
  - Reduces backwater at structure and reduces floodplain by 3.3 acres
  - Opens bridge opening, reducing flooding risks from blockages at the bridge
  - Eliminates continual maintenance to remove blockages
  - Reduces flow velocities through structure; thus, reducing scour /erosion and sediment transport downstream
  - Removes 11 property owners out of the potential flood risk area.



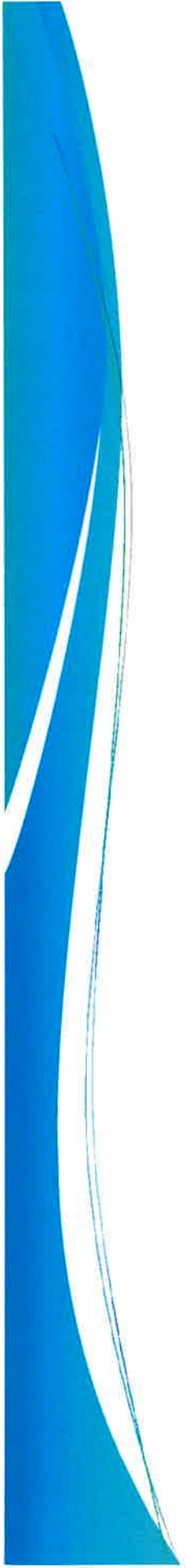
# Lake County Bridge 264



100 Year Inundation - Bridge Improvement  
Hart Street Bridge over Hart Ditch  
Lake County, Indiana

0 200 400 800 1,200 1,600 Feet  
1 inch = 400 feet

N



# Lake County Bridge 264



- Hart Ditch
- 100-yr Event
- Normal Blockage
- Major Blockage



100 Year Inundation Blockage  
Hart Street Bridge over Hart Ditch  
Lake County, Indiana